

~ Warehouse Space in Southwest Winnipeg ~



FOR SUBLEASE

1370 Sony Place

WINNIPEG, MB

TREVOR CLAY, Broker, Principal

(204) 985-1365

trevor.clay@capitalgrp.ca

Services provided by Trevor Clay Personal Real Estate Corporation

GARY GOODMAN, Vice President, Sales & Leasing

(204) 997-4831

gary.goodman@capitalgrp.ca


Capital
COMMERCIAL REAL ESTATE
SERVICES INC.

capitalgrp.ca

Property Overview

PROPERTY DETAILS

AREA AVAILABLE (+/-) Unit 190: 52,919 sq. ft.

NET RENTAL RATE \$7.50 per sq. ft.

ADDITIONAL RENT TBD

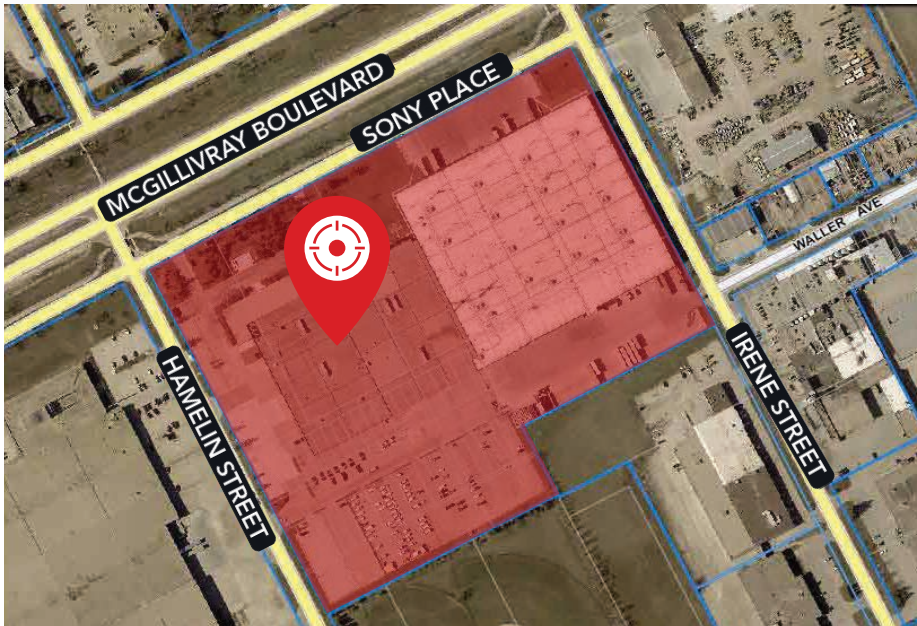
CLEAR HEIGHT (+/-) 22 ft.

COLUMN SPACING 36 ft. x 24 ft.

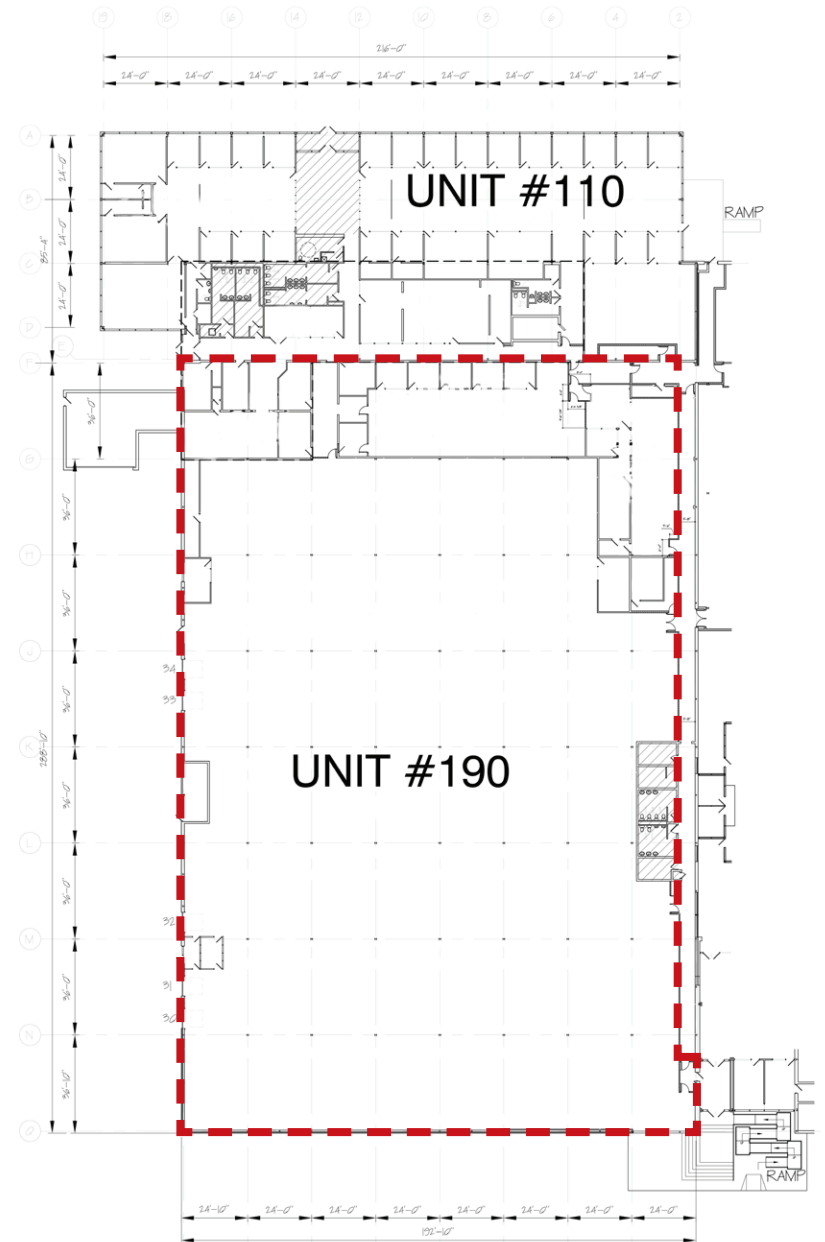
HEADLEASE EXPIRY DATE November 21, 2029

HIGHLIGHTS

- Space is air conditioned



FLOOR PLAN



Interior Photos



Contact

TREVOR CLAY, Broker, Principal

(204) 985-1365

trevor.clay@capitalgrp.ca

Services provided by Trevor Clay Personal Real Estate Corporation

GARY GOODMAN, Vice President, Sales & Leasing

(204) 997-4831

gary.goodman@capitalgrp.ca

CAPITAL COMMERCIAL REAL ESTATE SERVICES INC.

300-570 Portage Avenue, Winnipeg, MB R3C 0G4 | T (204) 943-5700 | F (204) 956-2783 | capitalgrp.ca

Disclaimer: Capital Commercial Real Estate Services Inc. ("Capital") does not accept or assume any responsibility or liability, direct or consequential, for the information set out herein, including, without limitation, any projections, images, opinions, assumptions and estimates obtained from third parties. This information has not been verified by Capital, and Capital does not guarantee the accuracy, correctness and completeness of this information. The recipient of this information should take such steps as the recipient may deem necessary to verify the information in this document prior to placing any reliance upon it. The information may change and any property described in this document may be withdrawn from the market at any time without notice or obligation to the recipient from Capital.