

~ Redeveloped Multi-tenant Industrial With Excess Land ~



FOR LEASE

605 Mercy Street

SELKIRK, MB

GARY GOODMAN, Vice President, Sales & Leasing
(204) 997-4831
gary.goodman@capitalgrp.ca

ERIC OTT, Associate Vice President, Sales & Leasing
(204) 985-1378
eric.ott@capitalgrp.ca

Services provided by Eric A. Ott Personal Real Estate Corporation


Capital
COMMERCIAL REAL ESTATE
SERVICES INC.

capitalgrp.ca

Property Overview

PROPERTY DETAILS

AREA AVAILABLE (+/-) 11,900 sq. ft. to 80,600 sq. ft. in various configurations

NET RENTAL RATE MARKET (depending on demising and buildout)

ADDITIONAL RENT \$2.00 per sq. ft.

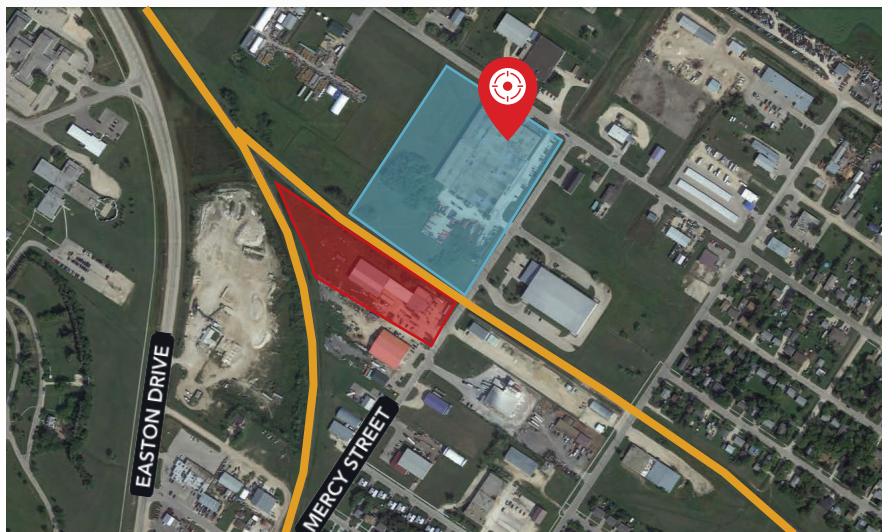
LOADING 12' x 14' grade doors throughout

ZONING M1 - Light Industrial

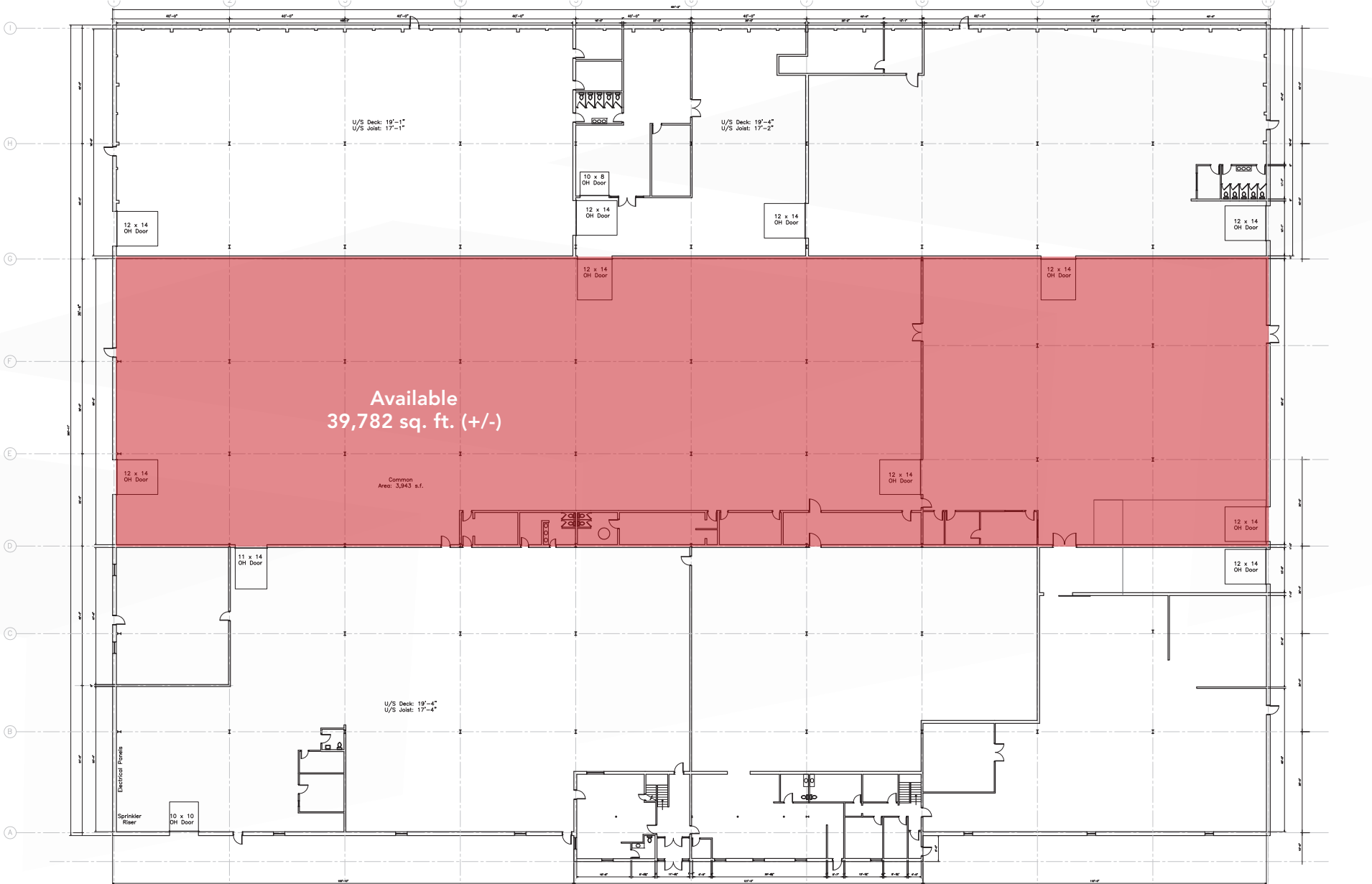
CLEAR HEIGHT (+/-) 17'

HIGHLIGHTS

- Shell space, ideal for warehouse or manufacturing
- Excess land can be leased for compound space, or together with neighbouring warehouse
- Compound can be fenced and graveled to suit
- Heavy power multi-tenant building



Floor Plan



Mercy Street Industrial Complex

Situated at the corner of Mercy Street and Greenwood Avenue, at the heart of Selkirk's industrial area, the complex is strategically located near major transportation routes, including Hwy 4, Hwy 9, and serviced by a CPKC Rail line. The area is fully serviced by public transportation running along Greenwood Avenue, and nearby retail amenities. Residential density and a diversified workforce is strong, with existing adjacent residential neighbourhoods and new development currently under construction.

There are upcoming vacancies in 511 Mercy & 605 Mercy, with major tenants relocating into larger premises and freeing up new space. The Landlord is in the process of upgrading the buildings with significant investment in façade, roof, utilities, lighting.

There is excess land available for compound development, or standalone build-to-suit opportunity.



CPKC Rail Line



605 Mercy Street

511 Mercy Street



COMMERCIAL REAL ESTATE
SERVICES INC.

Contact

GARY GOODMAN, Vice President, Sales & Leasing

(204) 997-4831

gary.goodman@capitalgrp.ca

ERIC OTT, Associate Vice President, Sales & Leasing

(204) 985-1378

eric.ott@capitalgrp.ca

Services provided by Eric A. Ott Personal Real Estate Corporation

CAPITAL COMMERCIAL REAL ESTATE SERVICES INC.

300-570 Portage Avenue, Winnipeg, MB R3C 0G4 | T (204) 943-5700 | F (204) 956-2783 | capitalgrp.ca

Disclaimer: Capital Commercial Real Estate Services Inc. ("Capital") does not accept or assume any responsibility or liability, direct or consequential, for the information set out herein, including, without limitation, any projections, images, opinions, assumptions and estimates obtained from third parties. This information has not been verified by Capital, and Capital does not guarantee the accuracy, correctness and completeness of this information. The recipient of this information should take such steps as the recipient may deem necessary to verify the information in this document prior to placing any reliance upon it. The information may change and any property described in this document may be withdrawn from the market at any time without notice or obligation to the recipient from Capital.