

~ Warehouse with Developed Office Space Near Plessis Business Centre ~



**FOR LEASE**

**219 Gunn Road**

**WINNIPEG, MB**

BRETT CHARTIER, Associate Vice President, Sales & Leasing  
(204) 985-1366

[brett.chartier@capitalgrp.ca](mailto:brett.chartier@capitalgrp.ca)

Services provided by Brett Chartier Personal Real Estate Corporation

DERRICK CHARTIER, Principal  
(204) 985-1369

[derrick.chartier@capitalgrp.ca](mailto:derrick.chartier@capitalgrp.ca)

Services provided by Derrick Chartier Personal Real Estate Corporation

  
**Capital**  
COMMERCIAL REAL ESTATE  
SERVICES INC.

[capitalgrp.ca](http://capitalgrp.ca)

# Property Details

**BUILDING AREA (+/-)** 7,975 sq. ft.

**LAND AREA (+/-)** 1.83 acres

**AREA AVAILABLE (+/-)** 1,717 - 7,975 sq. ft.  
\*Demising options available

**NET RENTAL RATE** \$14.00 per sq. ft.

**ADDITIONAL RENT** \$4.00 per sq. ft. (est. 2024)

**LOADING** 2 Grade Loading Doors

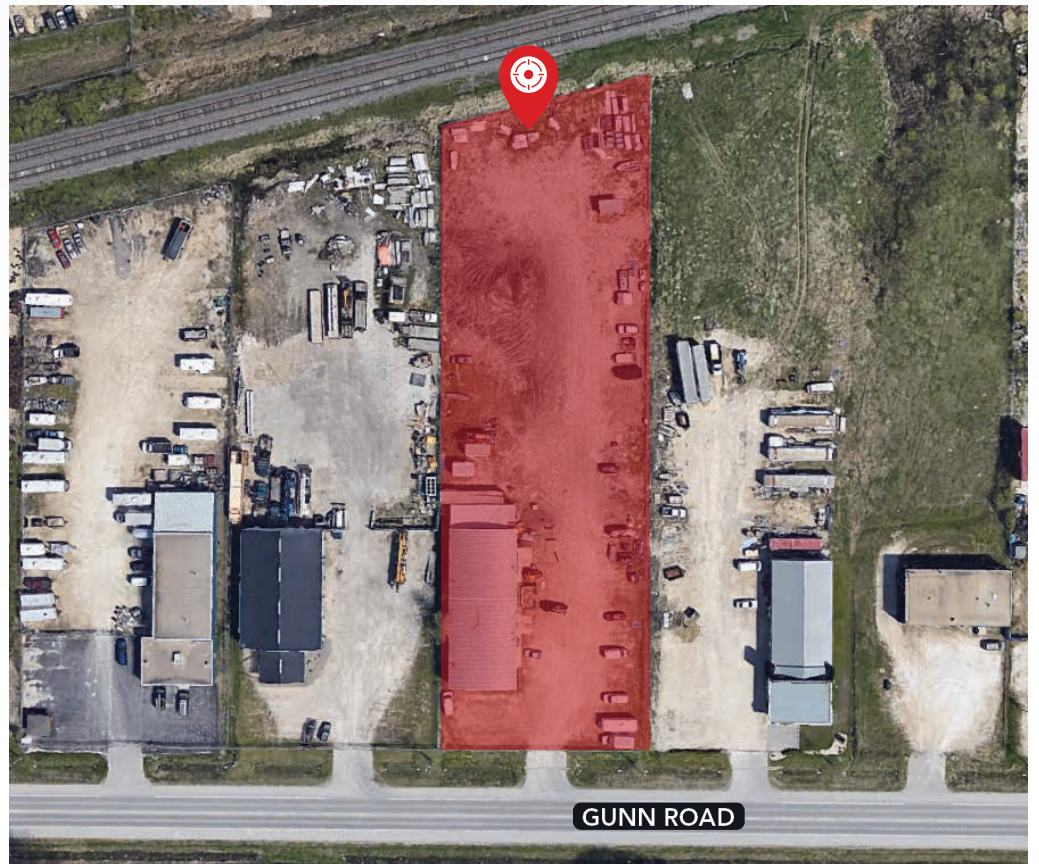
**ZONING** MG - Industrial General

**CLEAR HEIGHT (+/-)** 16' to 18'2"

**AVAILABILITY** January 1, 2025

## HIGHLIGHTS

- Free standing industrial building in the RM of Springfield
- Developed office space on Main and Second Floor
- 1.66 acres of compound space



# Photos





COMMERCIAL REAL ESTATE  
SERVICES INC.

## Contact

BRETT CHARTIER, Associate Vice President, Sales & Leasing

(204) 985-1366

[brett.charteir@capitalgrp.ca](mailto:brett.charteir@capitalgrp.ca)

*Services provided by Brett Chartier Personal Real Estate Corporation*

DERRICK CHARTIER, Principal

(204) 985-1369

[derrick.charteir@capitalgrp.ca](mailto:derrick.charteir@capitalgrp.ca)

*Services provided by Derrick Chartier Personal Real Estate Corporation*

**CAPITAL COMMERCIAL REAL ESTATE SERVICES INC.**

300-570 Portage Avenue, Winnipeg, MB R3C 0G4 | T (204) 943-5700 | F (204) 956-2783 | [capitalgrp.ca](http://capitalgrp.ca)

Disclaimer: Capital Commercial Real Estate Services Inc. ("Capital") does not accept or assume any responsibility or liability, direct or consequential, for the information set out herein, including, without limitation, any projections, images, opinions, assumptions and estimates obtained from third parties. This information has not been verified by Capital, and Capital does not guarantee the accuracy, correctness and completeness of this information. The recipient of this information should take such steps as the recipient may deem necessary to verify the information in this document prior to placing any reliance upon it. The information may change and any property described in this document may be withdrawn from the market at any time without notice or obligation to the recipient from Capital.