

~ Fully Renovated Flex Space in St. Boniface Industrial Park ~



**FOR LEASE**

**133 De Baets Street**

**WINNIPEG, MB**

LUKE PAULSEN, Vice President, Sales & Leasing

(204) 985-1358

[luke.paulsen@capitalgrp.ca](mailto:luke.paulsen@capitalgrp.ca)

Services provided by Luke Paulsen Personal Real Estate Corporation

  
**Capital**  
COMMERCIAL REAL ESTATE  
SERVICES INC.

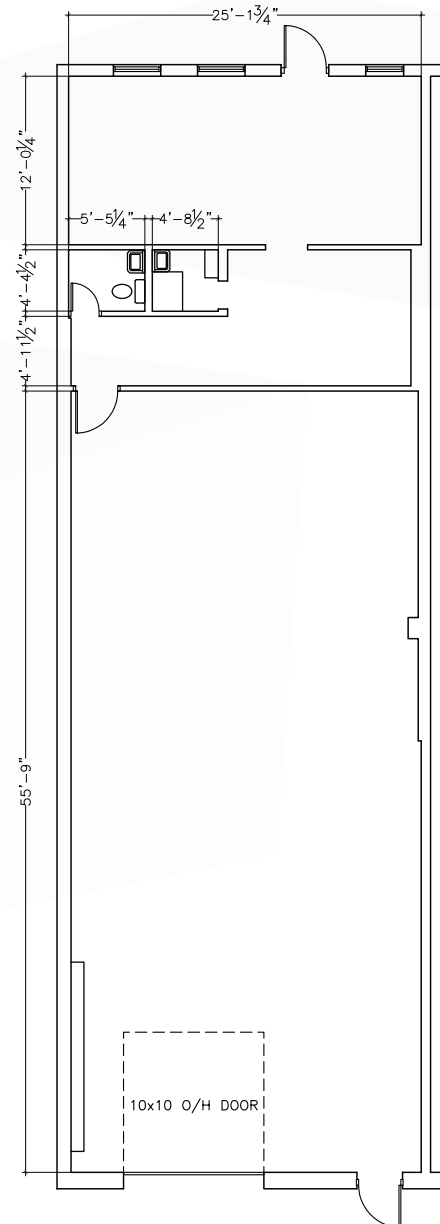
[capitalgrp.ca](http://capitalgrp.ca)

# Property Overview

## PROPERTY DETAILS

BUILDING AREA (+/-)	20,800 sq. ft.
AREA AVAILABLE (+/-)	2,080 sq. ft.
NET RENTAL RATE	\$9.95 per sq. ft.
ADDITIONAL RENT	\$6.56 per sq. ft.
LOADING	1 Grade Level Door
ZONING	M2 Industrial
CLEAR HEIGHT (+/-)	14 ft.
ELECTRICAL	100 Amp, 120/208 Volt, 3 Phase 4 Wire
AVAILABILITY	February 1, 2025

## FLOOR PLAN





# Site Aerial





# Photos





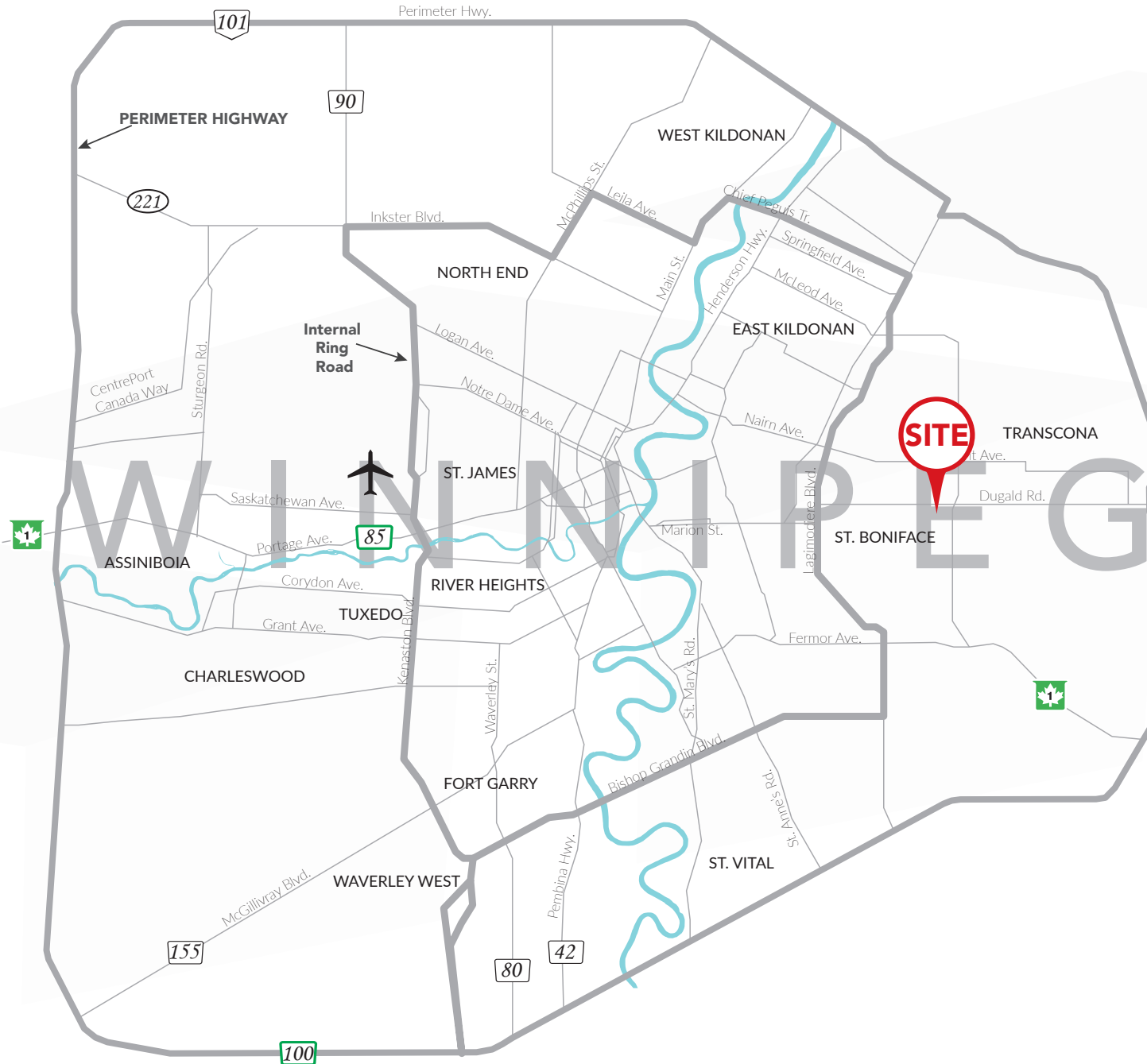
# St. Boniface Industrial Park

St. Boniface Industrial Park is Winnipeg's second largest industrial park, measuring over 700 acres. The Park is strategically located near major transportation routes, including Lagimodiere Boulevard, Dugald Road and Plessis Road. These routes provide easy, quick access to the Perimeter Hwy., Trans-Canada Hwy., and Downtown Winnipeg. The Park is fully serviced by public transportation and extensive nearby retail amenities. Residential density and a diversified workforce is strong, with existing adjacent residential neighbourhoods and new development currently under construction.

Winnipeg's main internal arteries provide immediate access to key regional and national transportation routes, including Trans Canada Highway that runs across Canada from east to west, the Perimeter Highway which allows ease of access around the City as well as Highways 75 and 59, which run south into the U.S. Winnipeg also acts as a gateway to Northern Manitoba via Highways 7, 8, and 9.



# Drive Time Analysis



RICHARDSON INTL. AIRPORT  
**24 minutes**



PORTAGE & MAIN  
**12 minutes**



POLO PARK SHOPPING CENTRE  
**18 minutes**



THE FORKS  
**12 minutes**



PERIMETER HIGHWAY  
**7 minutes**





COMMERCIAL REAL ESTATE  
SERVICES INC.

# Contact

LUKE PAULSEN, Vice President, Sales & Leasing

(204) 985-1358

[luke.paulsen@capitalgrp.ca](mailto:luke.paulsen@capitalgrp.ca)

Services provided by Luke Paulsen Personal Real Estate Corporation

## CAPITAL COMMERCIAL REAL ESTATE SERVICES INC.

300-570 Portage Avenue, Winnipeg, MB R3C 0G4 | T (204) 943-5700 | F (204) 956-2783 | [capitalgrp.ca](http://capitalgrp.ca)

Disclaimer: Capital Commercial Real Estate Services Inc. ("Capital") does not accept or assume any responsibility or liability, direct or consequential, for the information set out herein, including, without limitation, any projections, images, opinions, assumptions and estimates obtained from third parties. This information has not been verified by Capital, and Capital does not guarantee the accuracy, correctness and completeness of this information. The recipient of this information should take such steps as the recipient may deem necessary to verify the information in this document prior to placing any reliance upon it. The information may change and any property described in this document may be withdrawn from the market at any time without notice or obligation to the recipient from Capital.