

~ Modern Manufacturing Space with Low Op Costs, and Excess land for Compound ~



FOR LEASE

511 Mercy Street

SELKIRK, MB

GARY GOODMAN, Vice President, Sales & Leasing
(204) 997-4831
gary.goodman@capitalgrp.ca

ERIC OTT, Associate Vice President, Sales & Leasing
(204) 985-1378
eric.ott@capitalgrp.ca

Services provided by Eric A. Ott Personal Real Estate Corporation


Capital
COMMERCIAL REAL ESTATE
SERVICES INC.

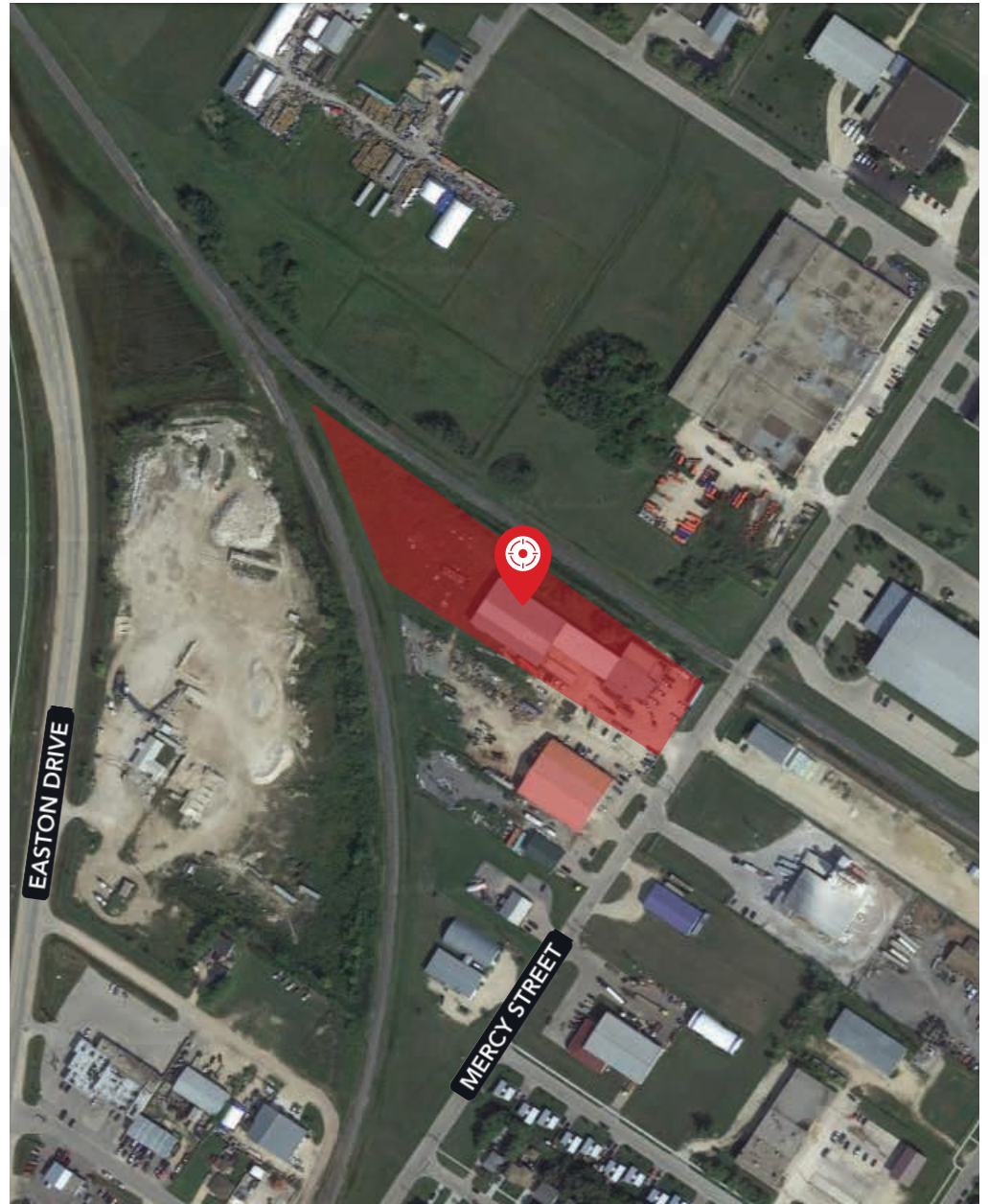
capitalgrp.ca

Property Details

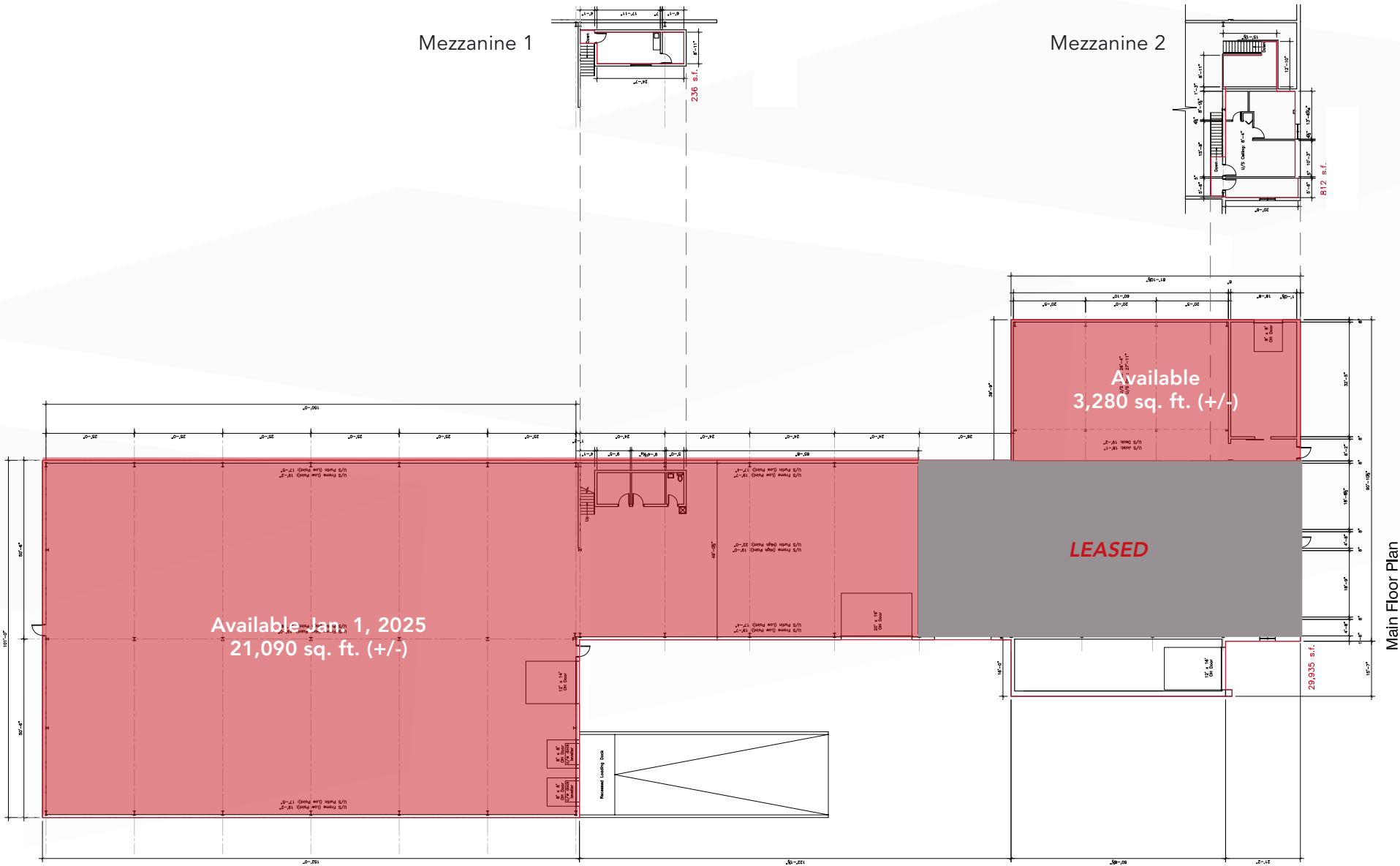
AREA AVAILABLE (+/-)	Unit 2: 21,090 sq. ft. Unit 3: 3,280 sq. ft.
NET RENTAL RATE	Unit 2: \$12.00 per sq. ft. Unit 3: \$8.00 per sq. ft.
ADDITIONAL RENT	\$3.00 per sq. ft.
LOADING	Unit 2: Dock and Grade Unit 3: Grade
ZONING	M1 - Industrial
CLEAR HEIGHT (+/-)	Unit 2: 21' Unit 3: 26' 4"
ELECTRICAL	600 Amp, 600 Volt, 3 Phase service
AVAILABILITY	Unit 2: January 1, 2025 Unit 3: Immediately

HIGHLIGHTS

- Tenant relocating to larger premises January 1, 2025
- Compound on excess land can be fenced and graveled to suit



Floor Plan



Main Floor Plan

Interior Photos





COMMERCIAL REAL ESTATE
SERVICES INC.



Contact

GARY GOODMAN, Vice President, Sales & Leasing
(204) 997-4831
gary.goodman@capitalgrp.ca

ERIC OTT, Associate Vice President, Sales & Leasing
(204) 985-1378
eric.ott@capitalgrp.ca

Services provided by Eric A. Ott Personal Real Estate Corporation

CAPITAL COMMERCIAL REAL ESTATE SERVICES INC.

300-570 Portage Avenue, Winnipeg, MB R3C 0G4 | T (204) 943-5700 | F (204) 956-2783 | capitalgrp.ca

Disclaimer: Capital Commercial Real Estate Services Inc. ("Capital") does not accept or assume any responsibility or liability, direct or consequential, for the information set out herein, including, without limitation, any projections, images, opinions, assumptions and estimates obtained from third parties. This information has not been verified by Capital, and Capital does not guarantee the accuracy, correctness and completeness of this information. The recipient of this information should take such steps as the recipient may deem necessary to verify the information in this document prior to placing any reliance upon it. The information may change and any property described in this document may be withdrawn from the market at any time without notice or obligation to the recipient from Capital.