

~ Newly Built Warehouse Space in West St. Paul ~



FOR LEASE

907 Kapelus Drive

WINNIPEG, MB

DAWSON GROENING, Advisor, Sales & Leasing
(204) 985-1383
dawson.groening@capitalgrp.ca

ERIC OTT, Associate Vice President, Sales & Leasing
(204) 985-1378
eric.ott@capitalgrp.ca

Services provided by Eric A. Ott Personal Real Estate Corporation


Capital
COMMERCIAL REAL ESTATE
SERVICES INC.

capitalgrp.ca

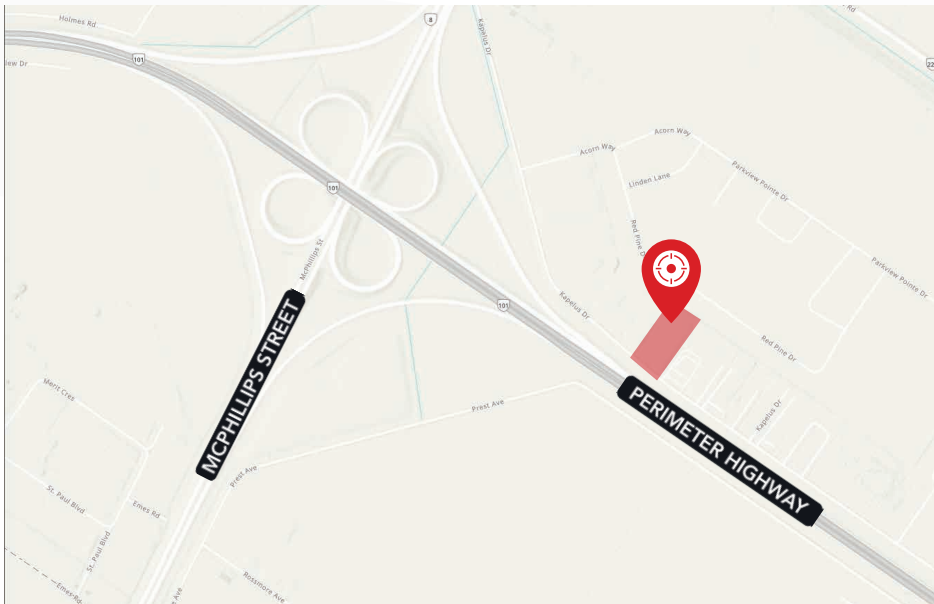
Property Overview

PROPERTY DETAILS

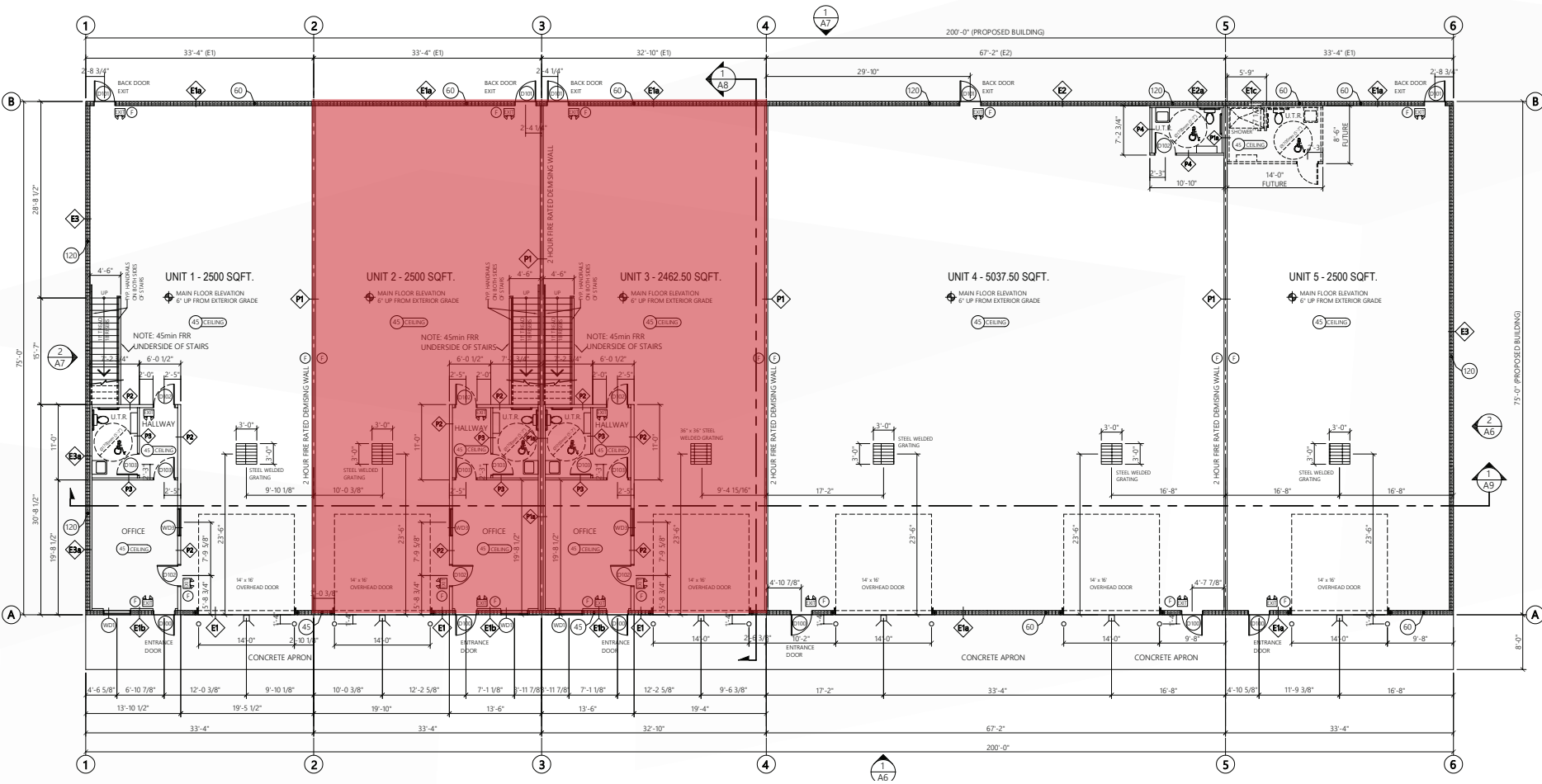
AREA AVAILABLE (+/-)	Unit 2: 2,500 sq. ft. plus mezzanine Unit 3: 2,462 sq. ft. plus mezzanine
NET RENTAL RATE	\$14.00 per sq. ft.
ADDITIONAL RENT	\$4.24 per sq. ft. plus mgmt. fee of 5% of Gross Rent
LOADING	Unit 2: (1) 14' x 16' grade loading door Unit 3: (1) 14' x 16' grade loading door
ZONING	CH - Commercial Highway
CLEAR HEIGHT (+/-)	18 ft.
ELECTRICAL	225 Amp, 3 Phase

PROPERTY HIGHLIGHTS

- Newly built warehouse space with one developed office, washroom and mezzanine
- Easy access to Perimeter Highway
- Option to combine units
- No City of Winnipeg business tax



Floor Plan



Interior Photos



Drive Time Analysis



PERIMETER HIGHWAY
3 minutes



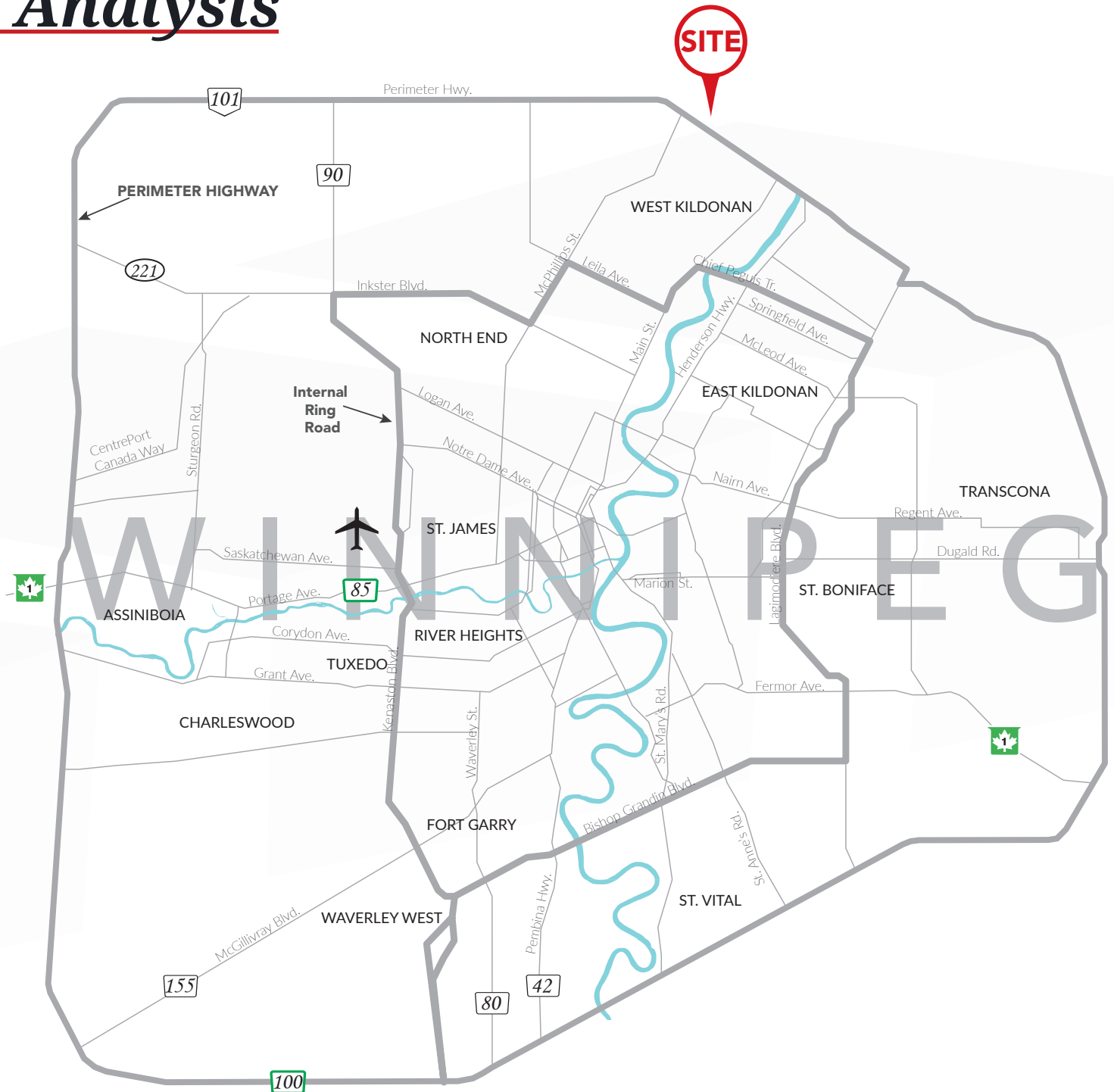
CHIEF PEGUIS TRAIL
9 minutes



WINNIPEG AIRPORT
22 minute



TRANSCANADA HIGHWAY
23 minutes





COMMERCIAL REAL ESTATE
SERVICES INC.

Contact

DAWSON GROENING, Advisor, Sales & Leasing
(204) 985-1383
dawson.groening@capitalgrp.ca

ERIC OTT, Associate Vice President, Sales & Leasing
(204) 985-1378
eric.ott@capitalgrp.ca

Services provided by Eric A. Ott Personal Real Estate Corporation

CAPITAL COMMERCIAL REAL ESTATE SERVICES INC.

300-570 Portage Avenue, Winnipeg, MB R3C 0G4 | T (204) 943-5700 | F (204) 956-2783 | capitalgrp.ca

Disclaimer: Capital Commercial Real Estate Services Inc. ("Capital") does not accept or assume any responsibility or liability, direct or consequential, for the information set out herein, including, without limitation, any projections, images, opinions, assumptions and estimates obtained from third parties. This information has not been verified by Capital, and Capital does not guarantee the accuracy, correctness and completeness of this information. The recipient of this information should take such steps as the recipient may deem necessary to verify the information in this document prior to placing any reliance upon it. The information may change and any property described in this document may be withdrawn from the market at any time without notice or obligation to the recipient from Capital.