

*~ High-Profile Retail Opportunity in The Village ~*



**FOR LEASE**



**Capital**  
COMMERCIAL REAL ESTATE  
SERVICES INC.

**218 Osborne Street**

**WINNIPEG, MB**

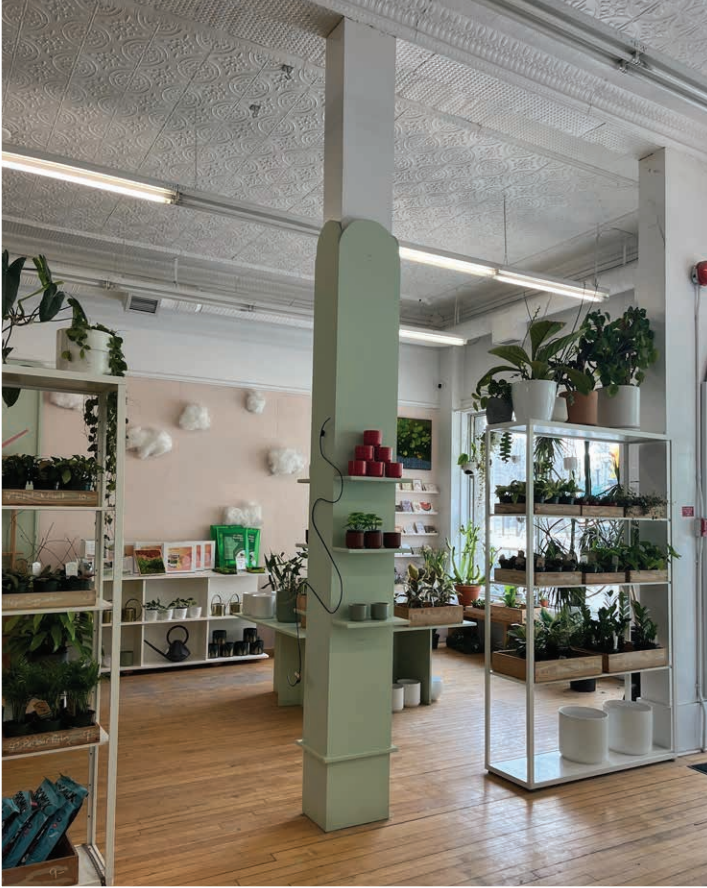
PRESLEY BORDIAN, Senior Advisor, Sales & Leasing  
(204) 985-1356  
[presley.bordian@capitalgrp.ca](mailto:presley.bordian@capitalgrp.ca)

[capitalgrp.ca](http://capitalgrp.ca)



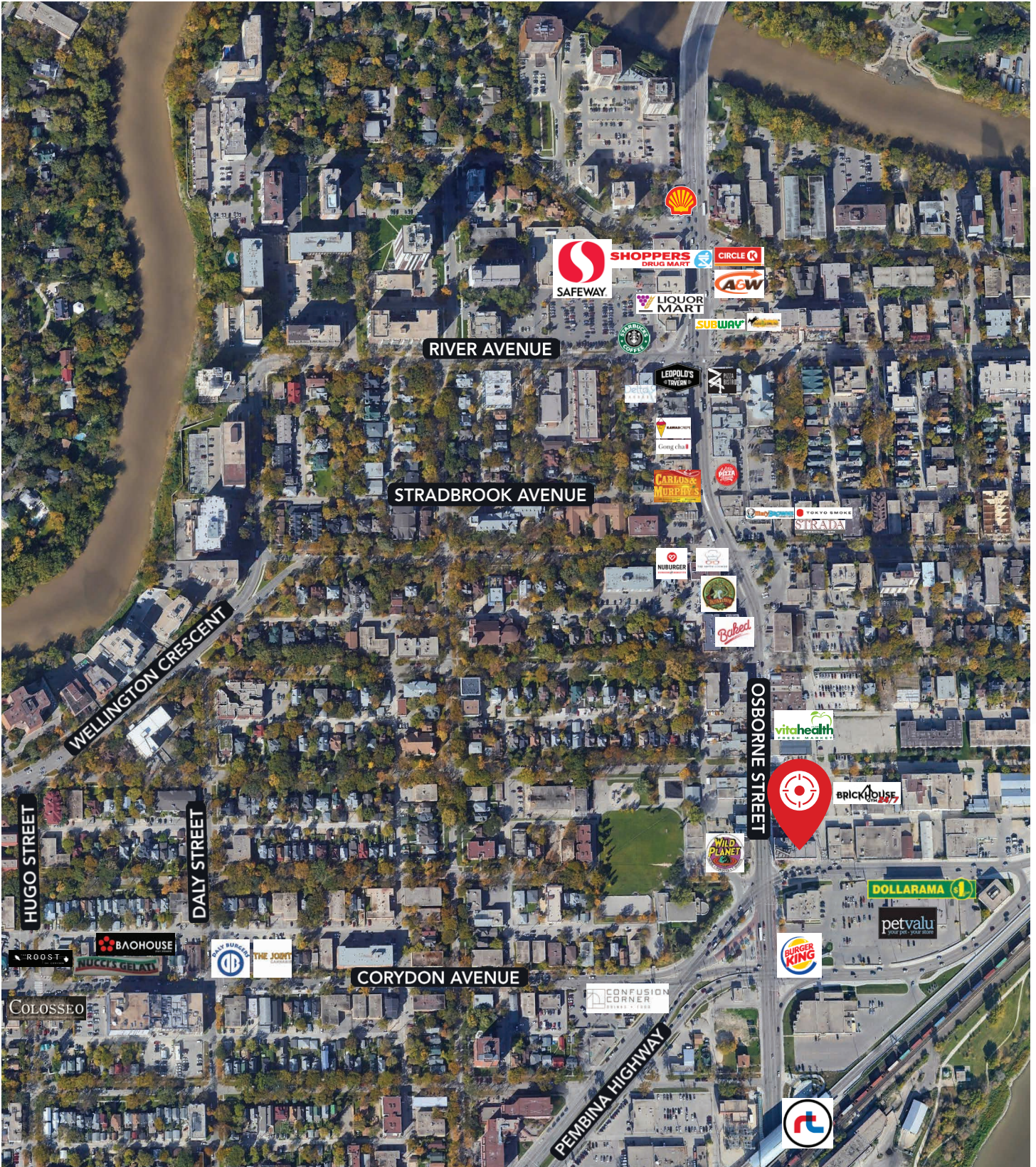


# Interior Photos



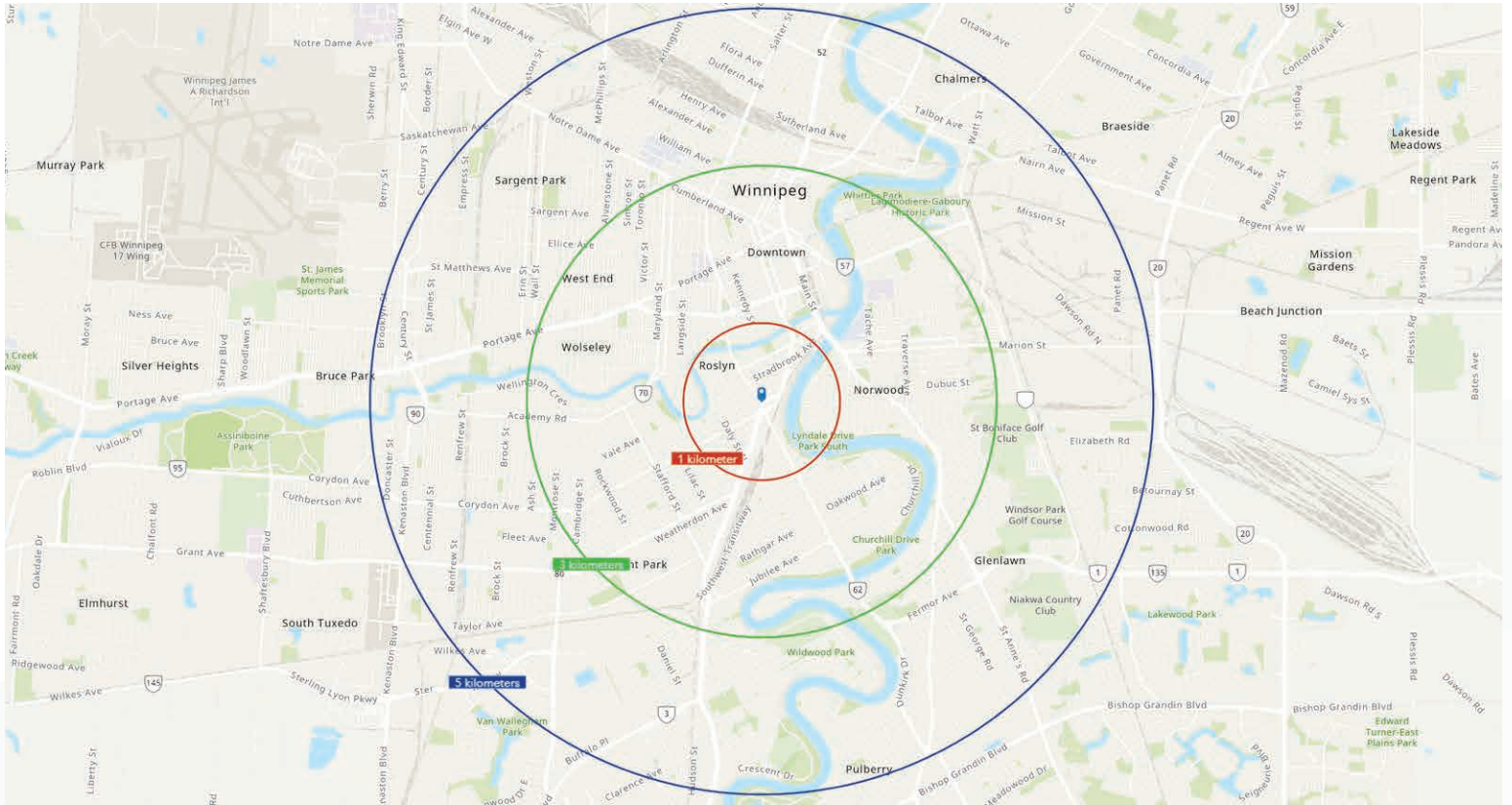


# Retail Aerial





# Demographic Analysis



## POPULATION

|      | Total Population | Projected Population (2029) |
|------|------------------|-----------------------------|
| 1 KM | 16,774           | 20,647                      |
| 3 KM | 119,360          | 141,793                     |
| 5 KM | 234,145          | 271,578                     |



## MEDIAN AGE

|      | Median Age |
|------|------------|
| 1 KM | 36         |
| 3 KM | 37         |
| 5 KM | 37         |



## HOUSEHOLD INCOME

|      | Avg. Household Income | Projected Household Income (2029) |
|------|-----------------------|-----------------------------------|
| 1 KM | \$78,192              | \$100,846                         |
| 3 KM | \$76,012              | \$96,624                          |
| 5 KM | \$80,220              | \$101,948                         |



## HOUSEHOLDS

|      | Total Households |
|------|------------------|
| 1 KM | 10,021           |
| 3 KM | 57,361           |
| 5 KM | 103,448          |

## Contact

PRESLEY BORDIAN, Senior Advisor, Sales & Leasing

(204) 985-1356

[presley.bordian@capitalgrp.ca](mailto:presley.bordian@capitalgrp.ca)

## **CAPITAL COMMERCIAL REAL ESTATE SERVICES INC.**

300-570 Portage Avenue, Winnipeg, MB R3C 0G4 | T (204) 943-5700 | F (204) 956-2783 | [capitalgrp.ca](http://capitalgrp.ca)

Disclaimer: Capital Commercial Real Estate Services Inc. ("Capital") does not accept or assume any responsibility or liability, direct or consequential, for the information set out herein, including, without limitation, any projections, images, opinions, assumptions and estimates obtained from third parties. This information has not been verified by Capital, and Capital does not guarantee the accuracy, correctness and completeness of this information. The recipient of this information should take such steps as the recipient may deem necessary to verify the information in this document prior to placing any reliance upon it. The information may change and any property described in this document may be withdrawn from the market at any time without notice or obligation to the recipient from Capital.