

Single-Tenant, Suburban Office Building



FOR SALE

1666 Dublin Avenue
WINNIPEG, MB

TREVOR CLAY, Principal, Broker
(204) 985-1365
trevor.clay@capitalgrp.ca

Services provided by Trevor Clay Personal Real Estate Corporation

Luke Paulsen, Vice President, Sales & Leasing
(204) 985-1358
luke.paulsen@capitalgrp.ca

Services provided by Luke Paulsen Personal Real Estate Corporation

BRYN OLIVER, Principal
(204) 985-1379
bryn.oliver@capitalgrp.ca

Services provided by Bryn Oliver Personal Real Estate Corporation

Capital
COMMERCIAL INVESTMENT
SERVICES

1666 Dublin Avenue

THE OFFERING

CCIS | Capital Commercial Investment Services is pleased to offer for sale 100% interest in 1666 Dublin Avenue ("The Property") in Winnipeg, MB. 1666 Dublin Avenue is an 8,125 sq. ft. 2-storey single tenant office building located in the St. James Industrial Area.

The Property is strategically located along Dublin Avenue near the amenities of the St. James Retail node and only a 3-minute drive to the James Richardson Armstrong International Airport. This Site location offers good access to tenants/owners and offers excellent exposure along Dublin Avenue and Border Street, excellent on-site parking and multiple access points. The building was originally constructed in 1964 and has since been renovated to functional office space. The Property is fully leased to FBC Communications Limited Partnership until December 16, 2025.

HIGHLIGHTS



User/Investor
Opportunity

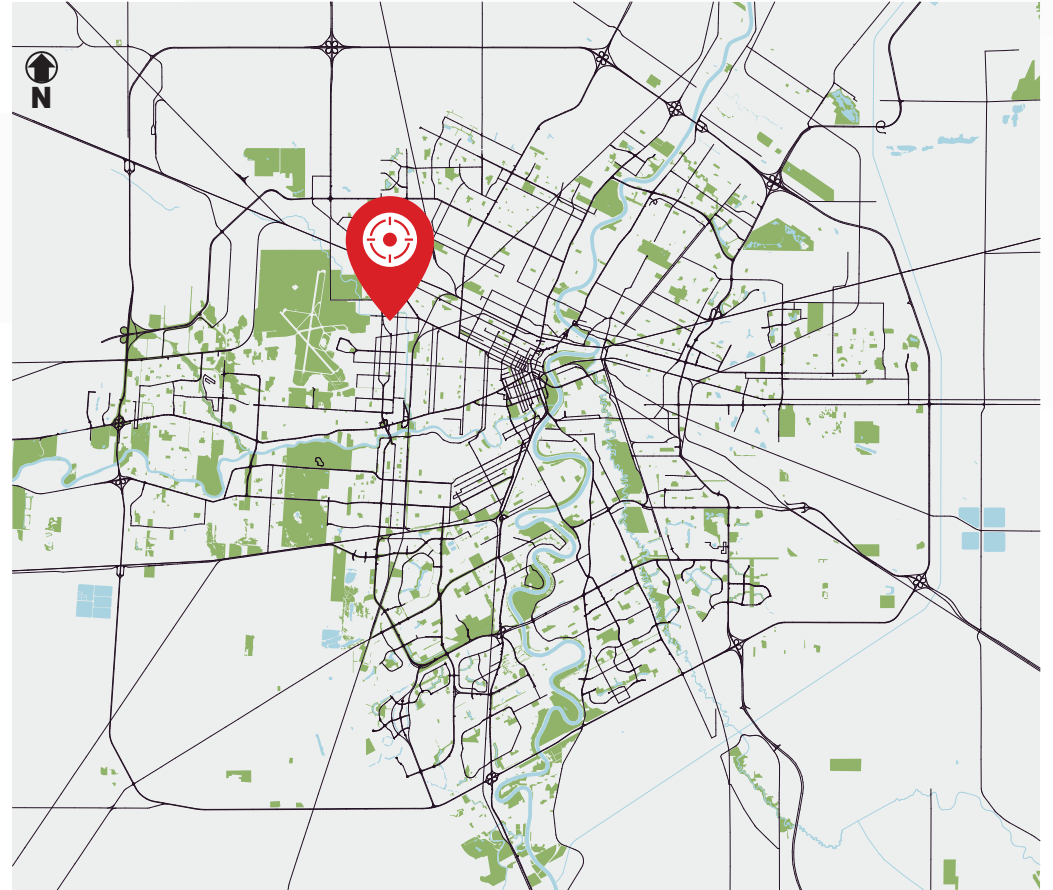


Strategically located in the Polo
Park retail node and St. James
industrial area



Ample on-site
parking

SITE LOCATION



Property Summary

PROPERTY DETAILS

PROPERTY TYPE	Suburban Single Tenant Office Building
LEGAL DESCRIPTION	SP Lots 1-4 Plan 32581 WLTO In OTM Lots 39 and 40 Parish of St. James
BUILDING AREA	8,125 sq. ft. (plus more than 4,000 sq. ft. of full height useable basement)
BUILDING CONFIGURATION	Rectangular
SITE AREA	16,037 sq. ft. (0.37 acres)
SITE COVERAGE RATIO	50.7%
PARKING	24-stall, asphalt parking lot
NUMBER OF STOREYS	2 (plus basement)
YEAR BUILT	1964
FRONTAGE	150'
ZONING	M2 – Manufctrng – General
SALE PRICE	\$2,100,000

BUILDING DETAILS

FOUNDATION	Concrete
STRUCTURE	Concrete Block Construction
EXTERIOR WALLS	Brick Veneer Masonry/Metal Siding
WINDOWS/DOORS	Anodized Aluminum Windows and Doors
ROOF	Built-up asphalt roof (BUR)
HVAC	Rooftop HVAC, Electric Baseboard Heat
ELECTRICAL	400 Amp, 120/208 Volt, 3 Phase
LIGHTING	Fluorescent and Halogen

Location Overview

The Property is well situated in the St. James Industrial area with easy access to primary trucking and municipal roads, including Route 90, Notre Dame Avenue, and Inkster Boulevard.

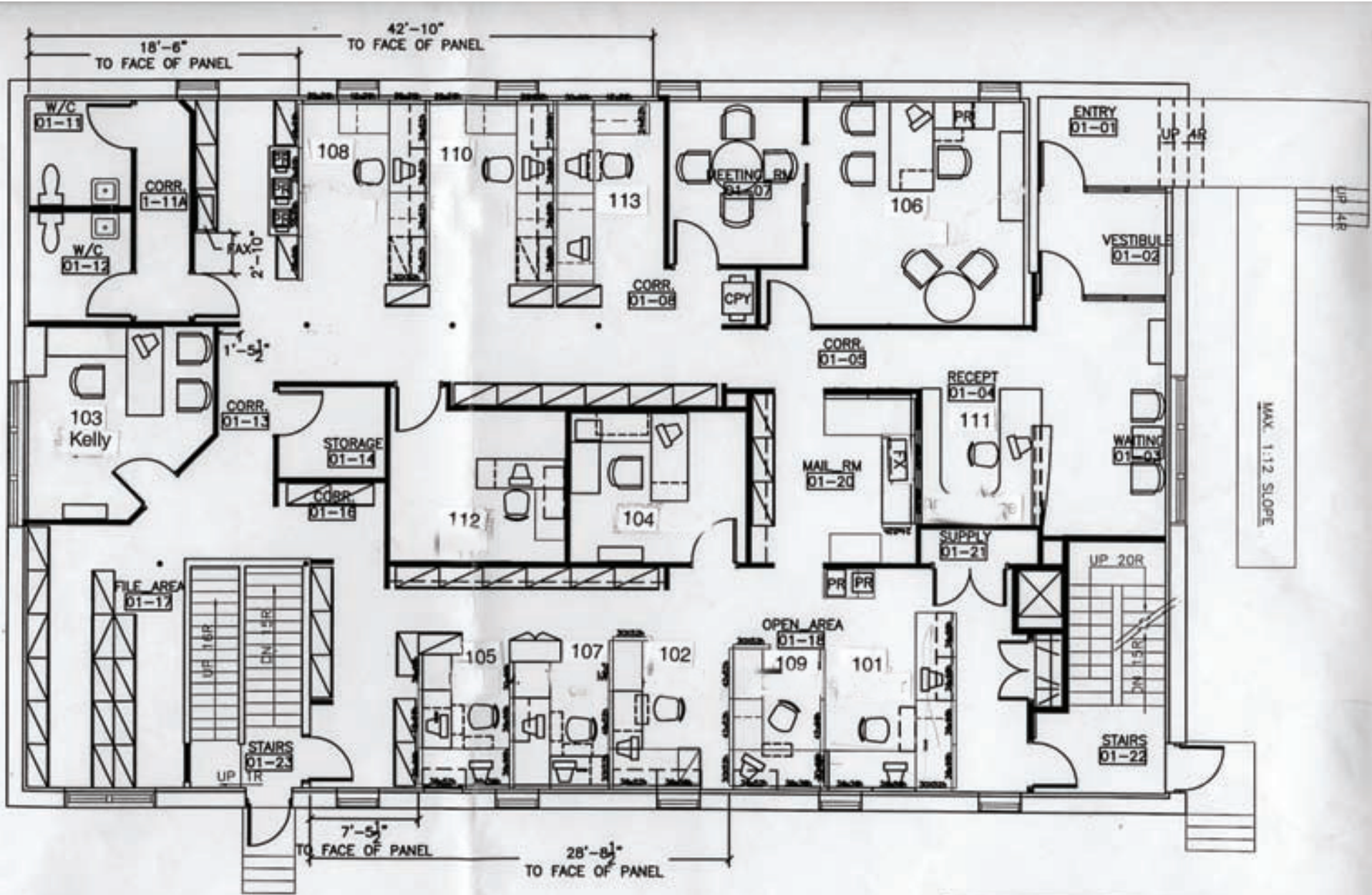
St. James Industrial is bounded by Notre Dame Avenue on the north and east, the CP Lariviere rail line on the east, Ellice, Silver, and St. Matthews Avenues on the south, and the James Armstrong Richardson International Airport on the west.



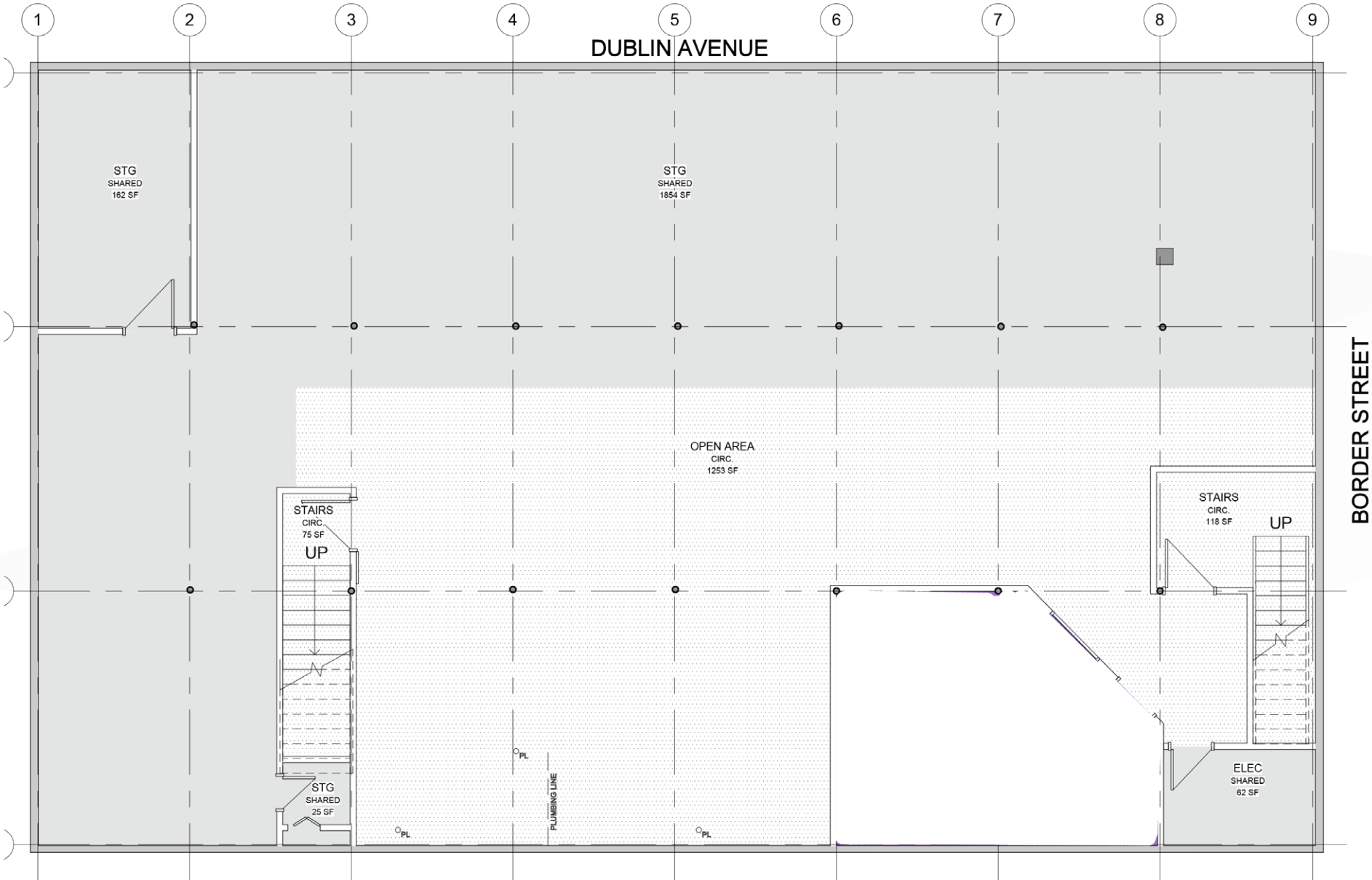
Site Aerial



Main Level Floor Plan



Lower Level Floor Plan



Contact

TREVOR CLAY, Principal, Broker

(204) 985-1365

trevor.clay@capitalgrp.ca

Services provided by Trevor Clay Personal Real Estate Corporation

Luke Paulsen, Vice President, Sales & Leasing

(204) 985-1358

luke.paulsen@capitalgrp.ca

Services provided by Luke Paulsen Personal Real Estate Corporation

BRYN OLIVER, Principal

(204) 985-1379

bryn.oliver@capitalgrp.ca

Services provided by Bryn Oliver Personal Real Estate Corporation

CAPITAL COMMERCIAL INVESTMENT

300-570 Portage Avenue, Winnipeg, MB R3C 0G4 | T (204) 943-5700 | capitalgrp.ca