

~ *Newer Industrial Building With Fenced Compound* ~



FOR LEASE

15 Dielmann Drive

HEADINGLEY, MB

Eric Ott, Associate Vice President, Sales & Leasing
(204) 985-1378

eric.ott@capitalgrp.ca

Services provided by Eric A. Ott Personal Real Estate Corporation

Dilpreet Mathauda, Senior Advisor, Sales & Leasing
(204) 985-1367

dilpreet.mathauda@capitalgrp.ca


Capital
COMMERCIAL REAL ESTATE
SERVICES INC.

capitalgrp.ca

Property Overview

PROPERTY DETAILS

BASIC RENT \$16.00 per sq. ft.

ADDITIONAL RENT \$4.00 per sq. ft.

COMPOUND 1 acre (+/-) fenced and gravelled compound

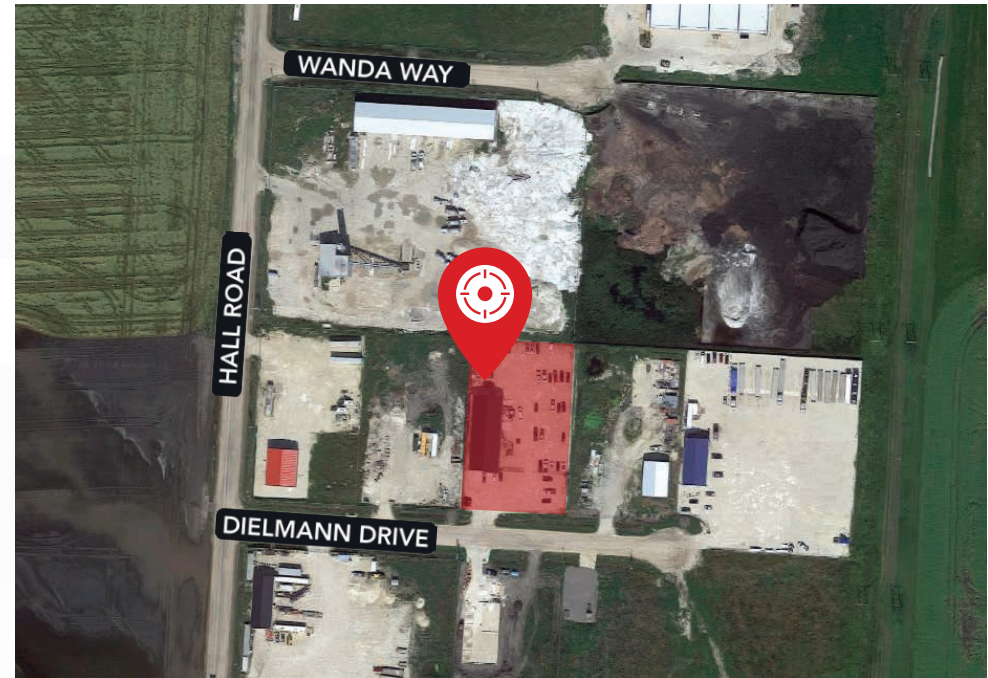
AREA AVAILABLE (+/-)	Mezzanine Office	760 sq. ft.
	Main Floor Office	960 sq. ft.
	Warehouse/Shop	3,845 sq. ft.
	Total	5,565 sq. ft.

CLEAR HEIGHT 16'

LOADING 14' H x 14' W & (1) 10' H x 14' W

ELECTRICAL 800 Amp service, 3 Phase, 120/208 Volt

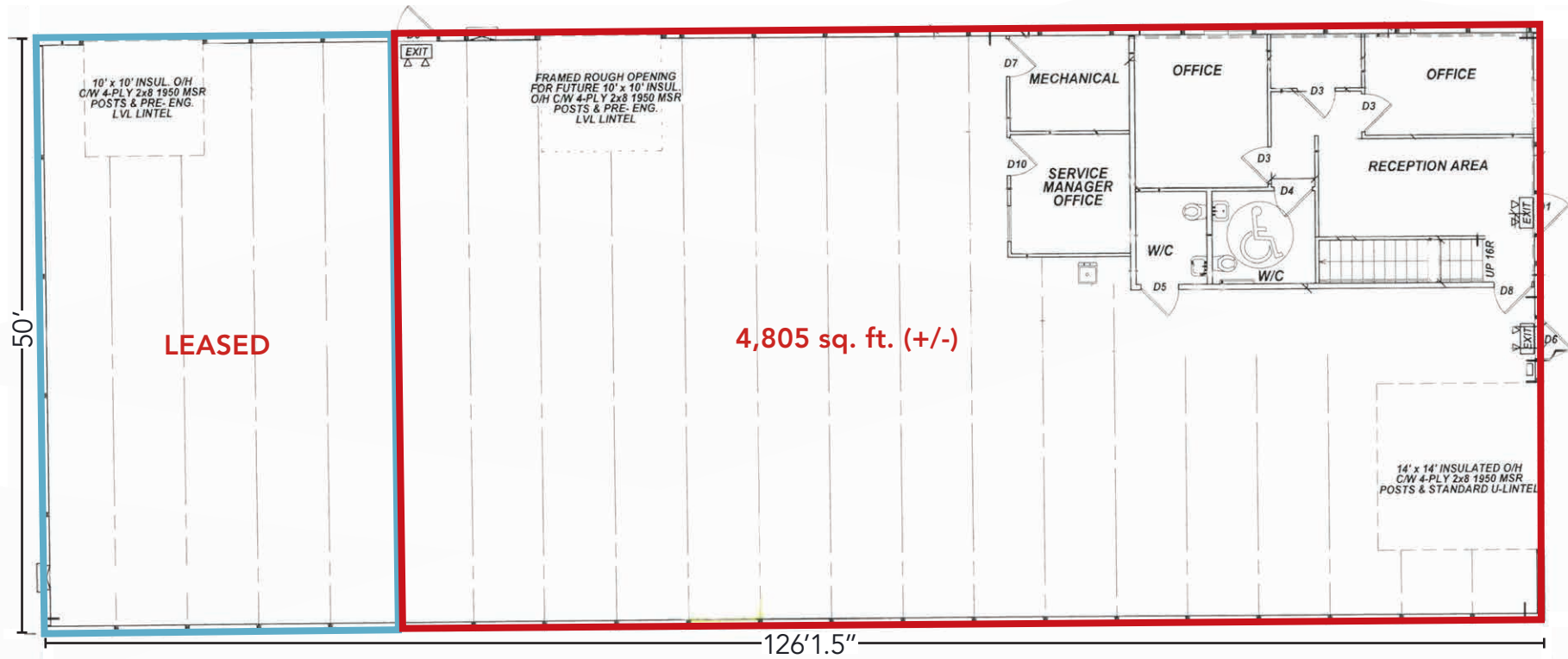
HEATING In-floor heat in shop area; furnace & AC for offices



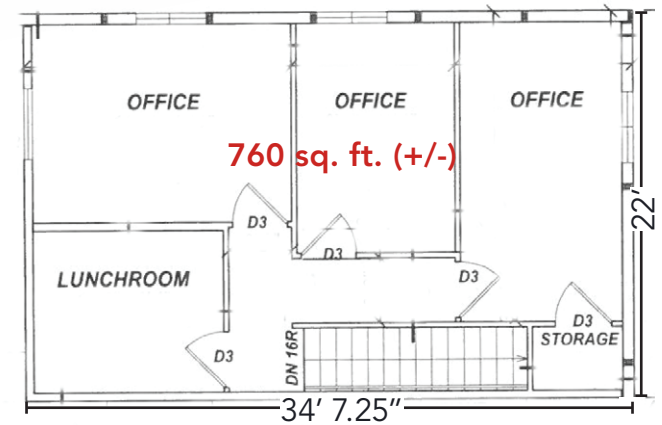
Floor Plan



MAIN FLOOR



MEZZANINE FLOOR



Photos





COMMERCIAL REAL ESTATE
SERVICES INC.

Contact

Eric Ott, Associate Vice President, Sales & Leasing
(204) 985-1378

eric.ott@capitalgrp.ca

Services provided by Eric A. Ott Personal Real Estate Corporation

Dilpreet Mathauda, Senior Advisor, Sales & Leasing
(204) 985-1367

dilpreet.mathauda@capitalgrp.ca

CAPITAL COMMERCIAL REAL ESTATE SERVICES INC.

300-570 Portage Avenue, Winnipeg, MB R3C 0G4 | T (204) 943-5700 | F (204) 956-2783 | capitalgrp.ca

Disclaimer: Capital Commercial Real Estate Services Inc. ("Capital") does not accept or assume any responsibility or liability, direct or consequential, for the information set out herein, including, without limitation, any projections, images, opinions, assumptions and estimates obtained from third parties. This information has not been verified by Capital, and Capital does not guarantee the accuracy, correctness and completeness of this information. The recipient of this information should take such steps as the recipient may deem necessary to verify the information in this document prior to placing any reliance upon it. The information may change and any property described in this document may be withdrawn from the market at any time without notice or obligation to the recipient from Capital.