

FOR LEASE

Capital
COMMERCIAL REAL ESTATE
SERVICES INC.

1555 St. Mary's Road

WINNIPEG, MB

~ Medical/Professional Office in St. Vital ~



PETER KAUFMANN, Vice President, Sales & Leasing
(204) 985-1362

peter.kaufmann@capitalgrp.ca

Services provided by Peter Kaufmann Personal Real Estate Corporation

DAWSON GROENING, Advisor, Sales & Leasing
(204) 985-1383

dawson.groening@capitalgrp.ca

capitalgrp.ca

Property Details

AREA AVAILABLE (+/-) Lower Level: 865 sq. ft.

NET RENT \$12.94 per sq. ft.

ADDITIONAL RENT	Property Taxes (2023)	\$4.40 per sq. ft.
	CAM (est. 2023)	\$7.76 per sq. ft.
	<hr/> Total	<hr/> \$12.16 per sq. ft.

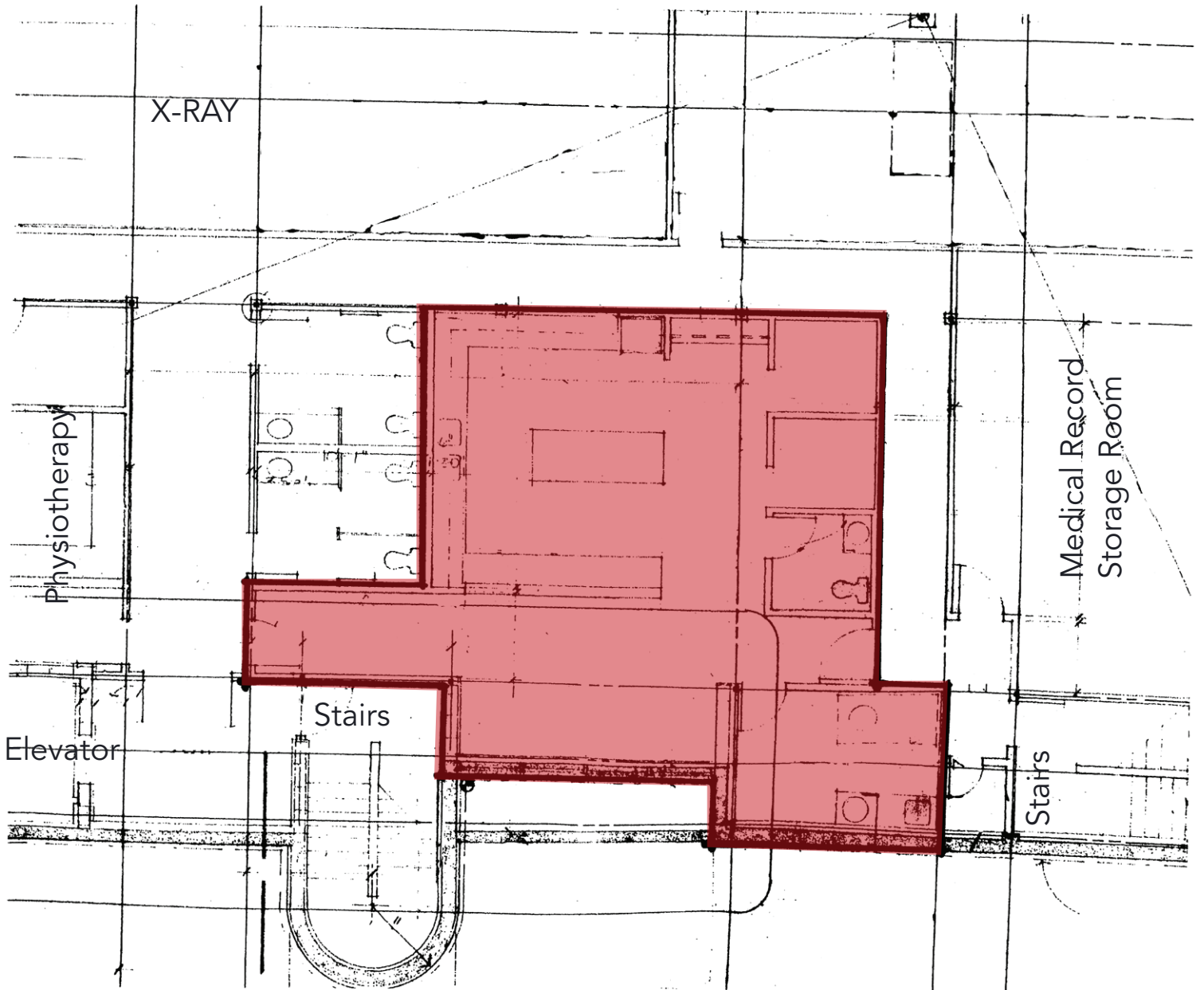
CURRENT TENANTS Meadowwood Medical Services, White Prairies Dental, Meadowwood Pharmacy, Robertson Shypit Soble Wood, St. Vital Physiotherapy, St. Vital Radiology Services

HIGHLIGHTS

- Large South facing window well
- 2-piece washroom in the space
- Modern Metal-Clad, concrete building with an elevator, 3 stair wells and common washrooms in lower level



Floor Plan



Interior Photos



Retail Aerial



Contact

PETER KAUFMANN, Vice President, Sales & Leasing

(204) 985-1362

peter.kaufmann@capitalgrp.ca

Services provided by Peter Kaufmann Personal Real Estate Corporation

DAWSON GROENING, Advisor, Sales & Leasing

(204) 985-1383

dawson.groening@capitalgrp.ca

CAPITAL COMMERCIAL REAL ESTATE SERVICES INC.

300 - 570 Portage Avenue, Winnipeg, Manitoba R3C 0G4 | T (204) 943-5700 | F (204) 956-2783 |

capitalgrp.ca