



COMMERCIAL REAL ESTATE
SERVICES INC.

FOR LEASE
HIGH-QUALITY OFFICE SPACE

AIR CANADA BUILDING

355 PORTAGE AVENUE, WINNIPEG, MB

CONTACT:

BRETT CHARTIER
(204) 985-1366

brett.chartier@capitalgrp.ca

*Services provided by Brett Chartier
Personal Real Estate Corporation*

RENNIE ZEGALSKI
(204) 985-1368

rennie.zegalski@capitalgrp.ca

*Services provided by Rennie Zegalski
Personal Real Estate Corporation*

Property Highlights



9-STOREY DOWNTOWN OFFICE
TOWER CONSTRUCTED IN 1985



PROFESSIONAL ON-SITE PROPERTY
MANAGEMENT



88 SURFACE PARKING STALLS
ON-SITE



24/7 ON-SITE BUILDING SECURITY
AND CARD ACCESS



BUILDING HOURS:
MONDAY-FRIDAY 6:00-18:00



BUILDING IS WELL-SERVICED BY
PUBLIC TRANSPORTATION



2 DOCK LEVEL LOADING DOORS
ACCESSIBLE FROM HARGRAVE
STREET



Air Canada Park Refurbishment

The City of Winnipeg announced \$2.5M to be spent on the complete revitalization of Air Canada Window Park as a public space project with completion expected by summer 2025.



*Artist's rendering of the proposed conceptual design for the park. Please note the perspectives capture some site features that are not included in the 2024 construction budget.

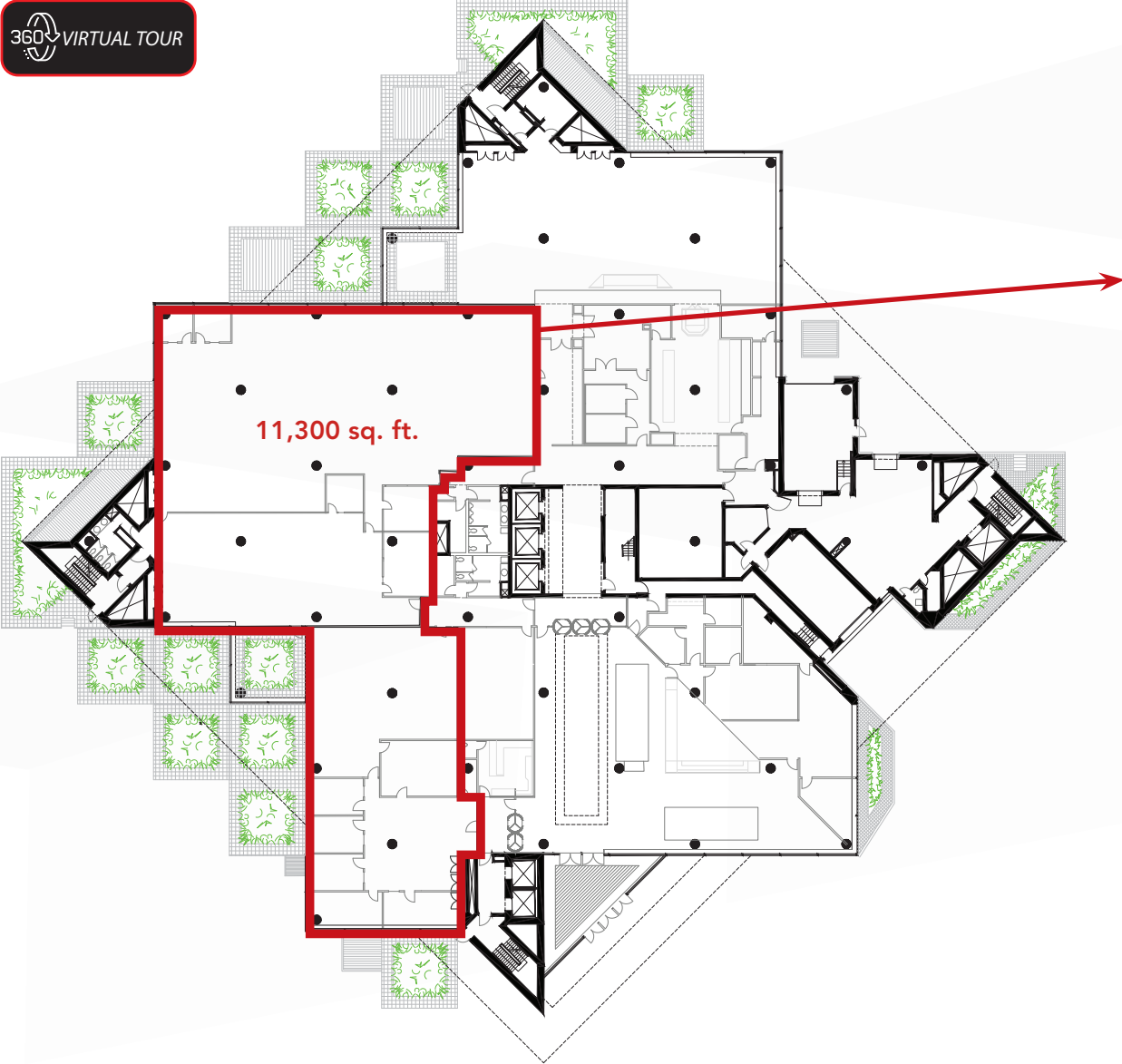
Property Highlights

LANDLORD	Air Canada								
PROPERTY MANAGER	Black & MacDonald (on-site property management)								
BUILDING AREA (+/-)	400,000 sq. ft.								
TYPICAL FLOOR PLATE (+/-)	Floors 1-5: 37,500 sq. ft. Floors 7-9: 39,500 sq. ft. (6th floor is mechanical & storage)								
AVAILABLE SPACES (+/-)	<table border="1"> <tr> <td>Main Floor</td> <td>11,300 sq. ft. (can be demised to 3,500, 6,250, or 7,800 sq. ft.)</td> </tr> <tr> <td>3rd Floor</td> <td>32,042 sq. ft.</td> </tr> <tr> <td>4th Floor</td> <td>32,440 sq. ft.</td> </tr> <tr> <td>7th Floor</td> <td>15,282 sq. ft.</td> </tr> </table>	Main Floor	11,300 sq. ft. (can be demised to 3,500, 6,250, or 7,800 sq. ft.)	3rd Floor	32,042 sq. ft.	4th Floor	32,440 sq. ft.	7th Floor	15,282 sq. ft.
Main Floor	11,300 sq. ft. (can be demised to 3,500, 6,250, or 7,800 sq. ft.)								
3rd Floor	32,042 sq. ft.								
4th Floor	32,440 sq. ft.								
7th Floor	15,282 sq. ft.								
ASKING NET RENT	\$15.00 per sq. ft.								
ADDITIONAL RENT	\$16.55 per sq. ft. (est. 2024)								
EXISTING BUILD-OUT	<ul style="list-style-type: none"> • Developed Office Space • Open concept • Former Call Centre Space 								
ELEVATORS	<ul style="list-style-type: none"> • 3 Elevators servicing Basement - 5th Floor • 2 Elevators servicing Main - 9th Floor • 1 Freight Elevator servicing Basement to Penthouse 								
TELECOMMUNICATIONS	Telus, Rogers/Shaw, Bell MTS, Manitoba Hydro								

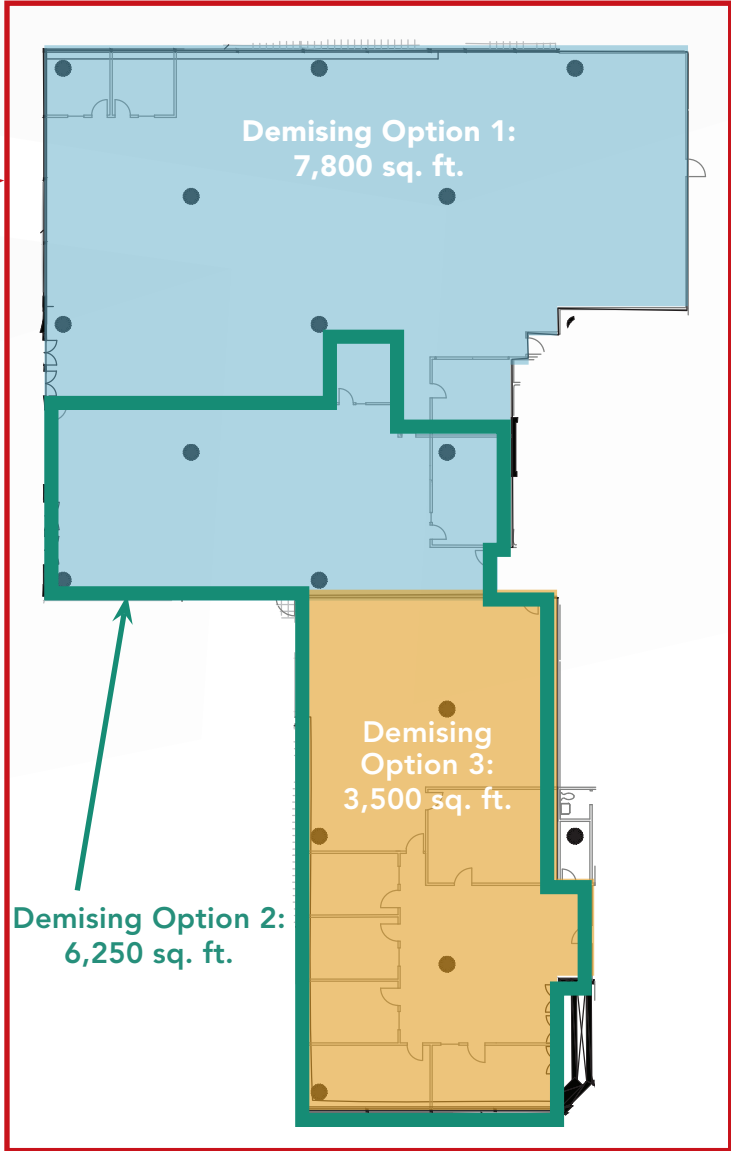


Floor Plan

MAIN FLOOR - 11,300 SQ. FT.

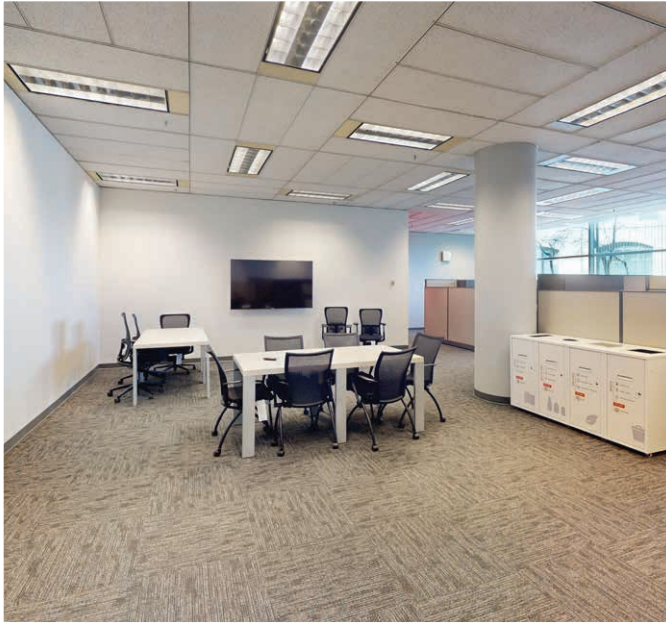


MAIN FLOOR DEMISING OPTIONS



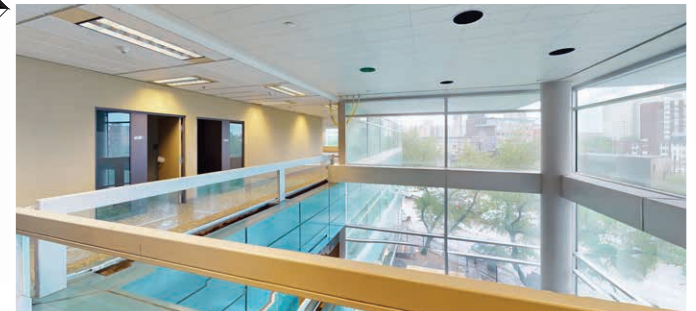
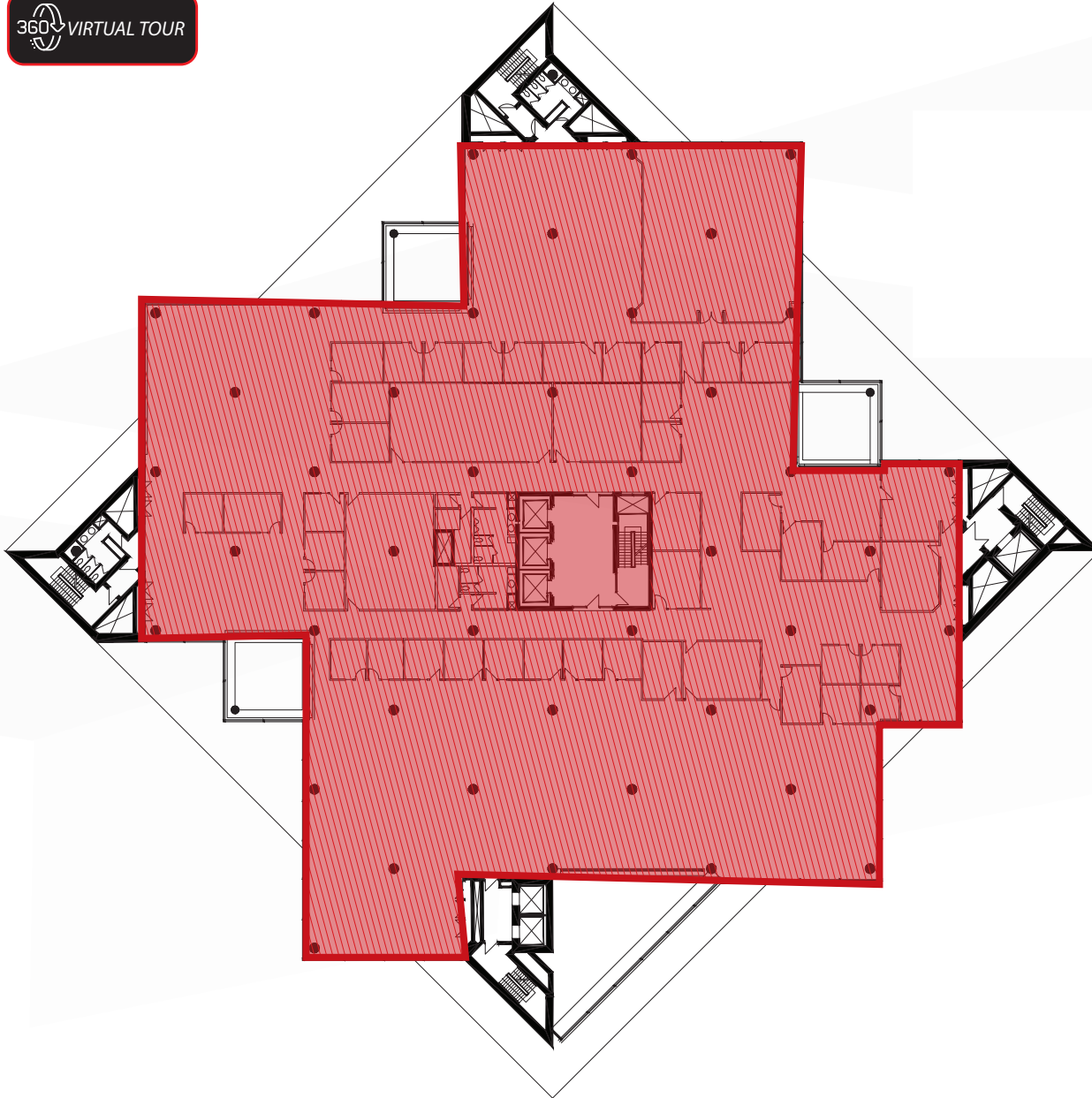
Interior Photos

MAIN FLOOR



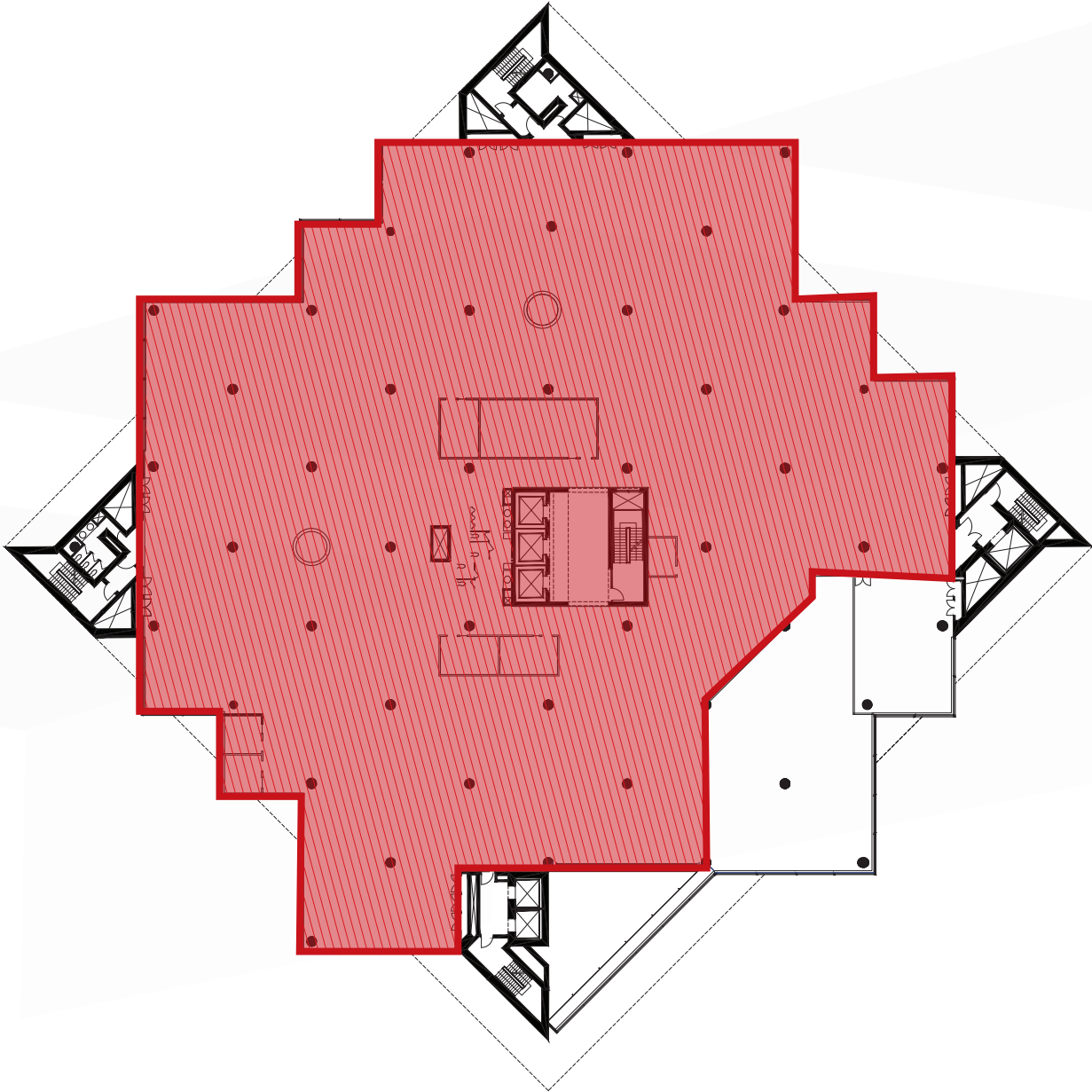
Floor Plan

3RD FLOOR - 32,042 SQ. FT.



Floor Plan

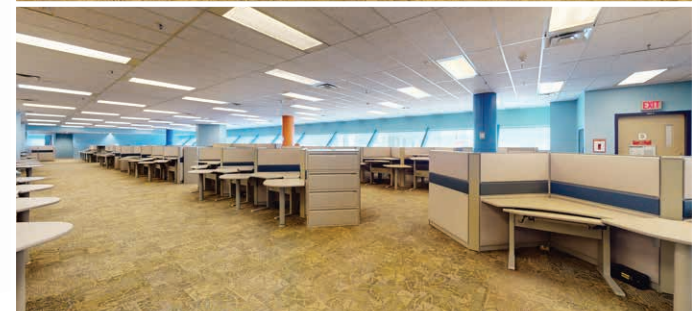
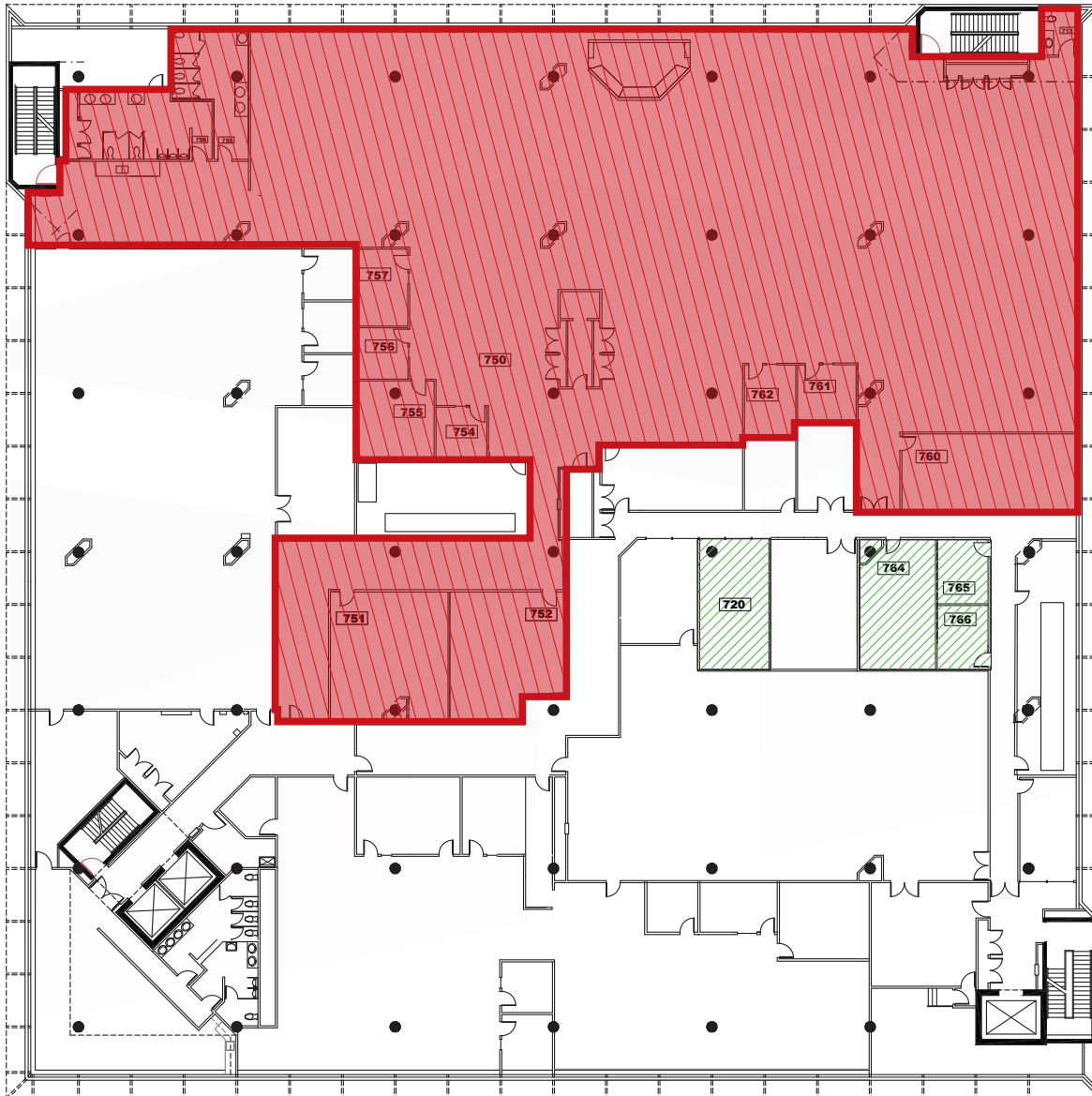
4TH FLOOR - 32,400 SQ. FT.



Floor Plan

7TH FLOOR - 15,282 SQ. FT.

360° VIRTUAL TOUR

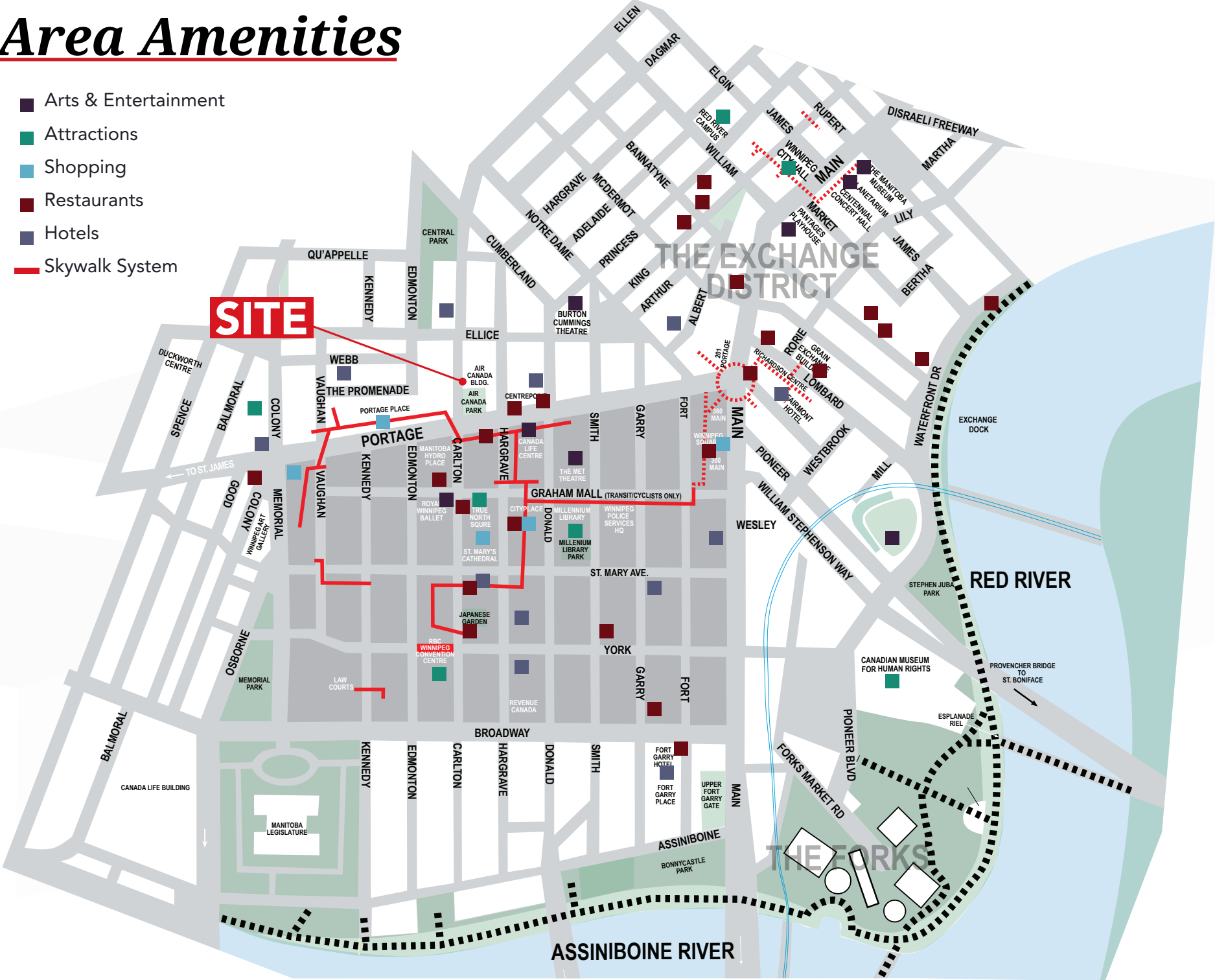


Location Overview



Area Amenities

- Arts & Entertainment
- Attractions
- Shopping
- Restaurants
- Hotels
- Skywalk System





COMMERCIAL REAL ESTATE
SERVICES INC.

AIR CANADA

Contact

BRETT CHARTIER, Associate Vice President, Sales & Leasing
(204) 985-1366

brett.chartier@capitalgrp.ca

Services provided by Brett Chartier Personal Real Estate Corporation

RENNIE ZEGALSKI, Principal

(204) 985-1368

rennie.zegalski@capitalgrp.ca

Services provided by Rennie Zegalski Personal Real Estate Corporation

CAPITAL COMMERCIAL REAL ESTATE SERVICES INC.

300-570 Portage Avenue, Winnipeg, MB R3C 0G4 | T (204) 943-5700 | F (204) 956-2783 | capitalgrp.ca

Disclaimer: Capital Commercial Real Estate Services Inc. ("Capital") does not accept or assume any responsibility or liability, direct or consequential, for the information set out herein, including, without limitation, any projections, images, opinions, assumptions and estimates obtained from third parties. This information has not been verified by Capital, and Capital does not guarantee the accuracy, correctness and completeness of this information. The recipient of this information should take such steps as the recipient may deem necessary to verify the information in this document prior to placing any reliance upon it. The information may change and any property described in this document may be withdrawn from the market at any time without notice or obligation to the recipient from Capital.