

**FOR SALE**

# **4100 Portage Avenue**

HEADINGLEY, MB

*~Vacant land parcels in Headingley~*



COMMERCIAL REAL ESTATE  
SERVICES INC.



# 4100 Portage Avenue

## PROPERTY DETAILS

ADDRESS 4100 Portage Avenue, Headingley, Manitoba

PARCEL G  
Land Area (+/-) 9.4 acres  
Tax Roll # 107550  
Legal Description PARCEL G PLAN 51853 WLTO  
IN RL 89 PARISH OF ST CHARLES

PARCELS H & J  
Land Area (+/-) 2.15 acres  
Tax Roll # 107540  
Legal Description PARCELS H AND J PLAN 51853  
WLTO IN RL 89 PARISH OF ST  
CHARLES

SALE PRICE \$325,000 per acre

ZONING CH - Highway Commercial

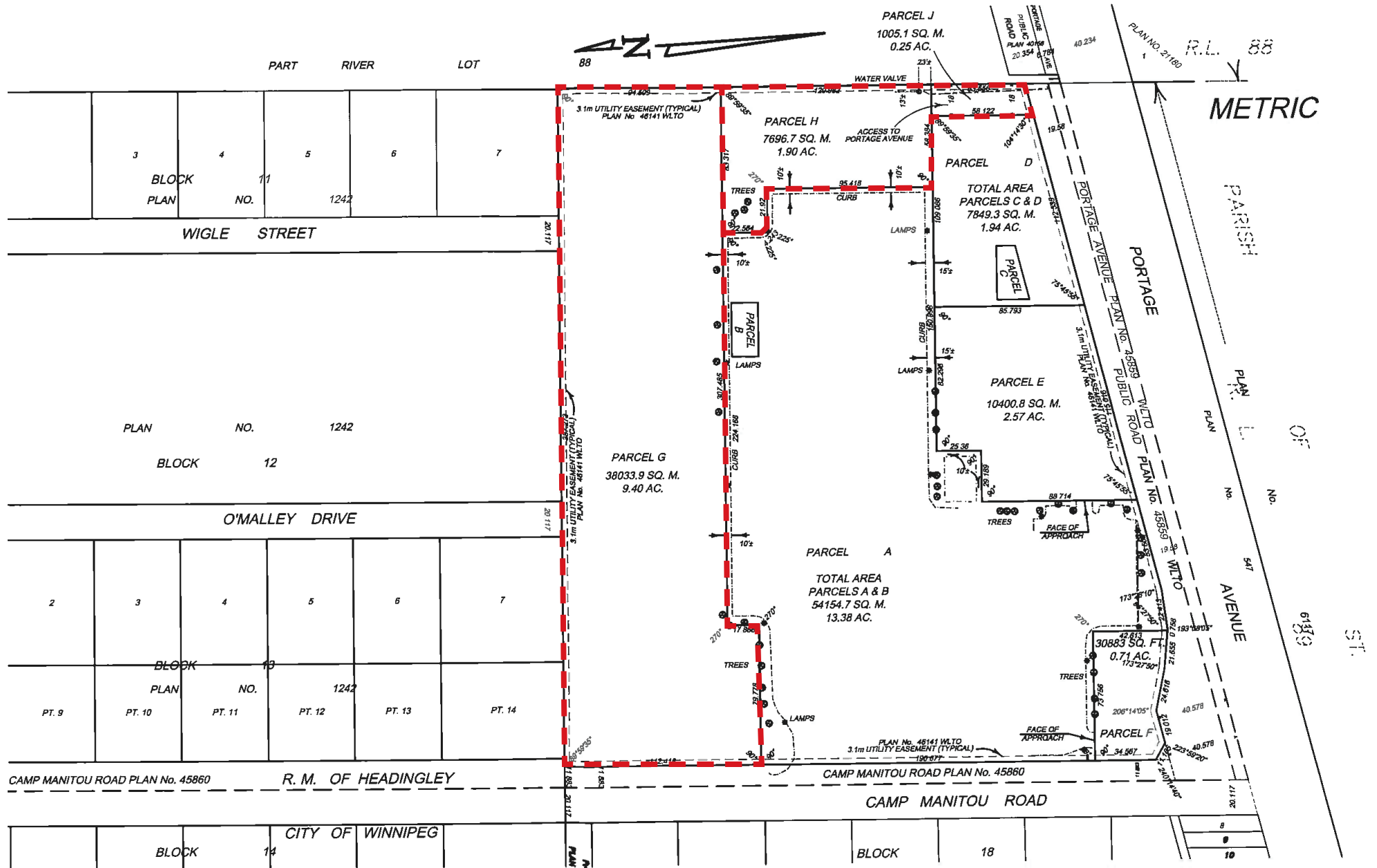
HIGHLIGHTS

- Direct access and egress to and from Camp Manitou Road
- Future frontage road south of Portage Avenue will provide direct access and egress to Parcels H & J



# 4100 Portage Avenue

## ZONING AERIAL



## CAPITAL COMMERCIAL REAL ESTATE SERVICES INC.

300 - 570 Portage Avenue, Winnipeg, Manitoba R3C 0G4

T (204) 943-5700 | F (204) 956-2783 | [capitalgrp.ca](http://capitalgrp.ca)

### **Bob Antymniuk**

Vice President, Sales & Leasing

(204) 985-1364

[bob.antymniuk@capitalgrp.ca](mailto:bob.antymniuk@capitalgrp.ca)