

~ Retail/Office Opportunity within Grocery Anchored Strip Mall ~



FOR LEASE



Windsor Park Shopping Centre

664 ELIZABETH ROAD, WINNIPEG, MB

BRETT CHARTIER,
Associate Vice President, Sales & Leasing
(204) 985-1366
brett.charteir@capitalgrp.ca

Services provided by Brett Chartier Personal Real Estate Corporation

DAWSON GROENING,
Advisor, Sales & Leasing
(204) 985-1383
dawson.groening@capitalgrp.ca

capitalgrp.ca

Property Details

BUILDING AREA (+/-) 33,155 sq. ft.

AREA AVAILABLE (+/-)

Tenant A:	2,027 sq. ft.
Tenant B:	1,125 sq. ft. Leased
Total:	3,152 sq. ft.

NET RENTAL RATE \$17.00 per sq. ft.

ADDITIONAL RENT \$7.34 per sq. ft. (est. 2023) plus 5% mgmt fee of Net

ZONING C2

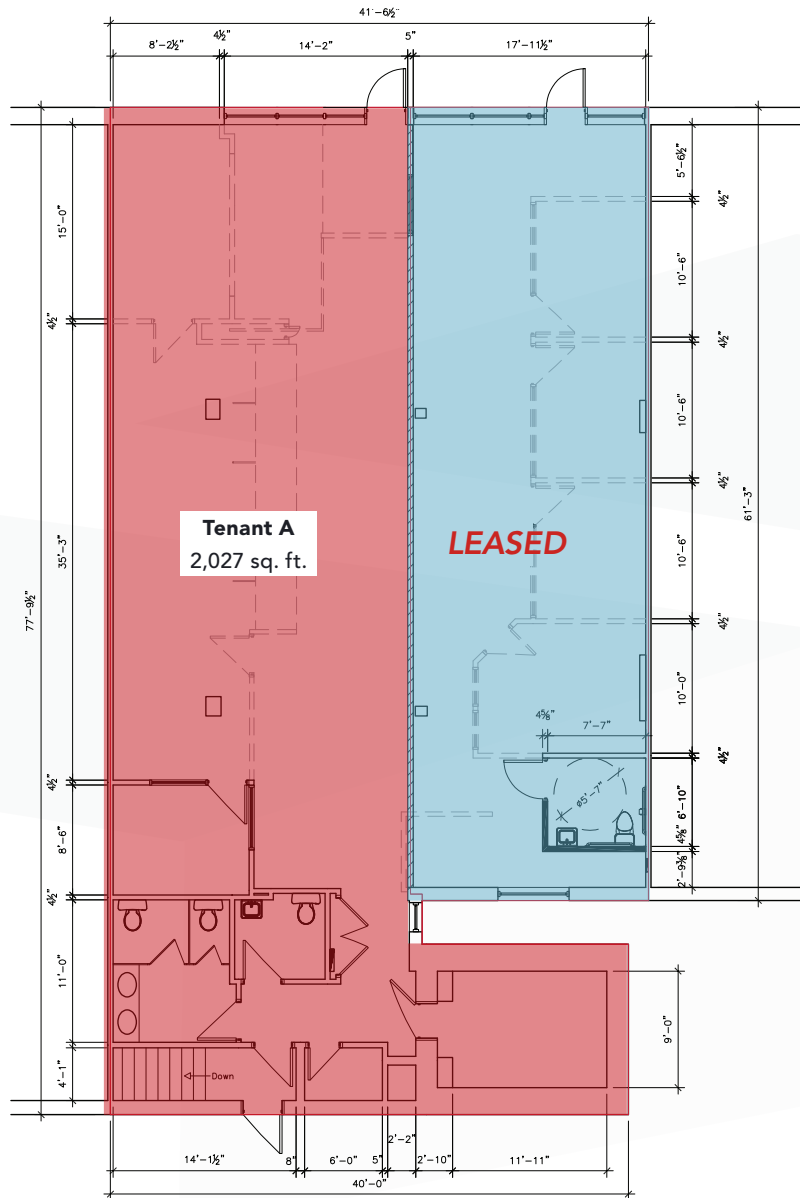
TRAFFIC COUNT 24,100 (average daily traffic count on Elizabeth Road) (2018 City of Winnipeg Traffic Flow Map)

AVAILABILITY July 1, 2024

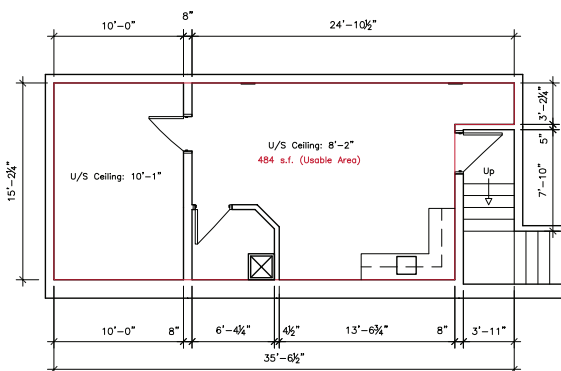


Floor Plan

MAIN FLOOR



LOWER LEVEL



Demographic Analysis



POPULATION	Total Population (2024)	Projected Population (2027)
1 KM	5,665	5,609
3 KM	51,510	52,132
5 KM	168,708	182,779



MEDIAN AGE	Median Age (2024)
1 KM	38.0
3 KM	39.9
5 KM	38.4



HOUSEHOLD INCOME	Avg. Household Income (2024)	Projected Household Income (2027)
1 KM	\$90,071	\$103,427
3 KM	\$89,974	\$103,467
5 KM	\$90,694	\$104,687



HOUSEHOLDS	Total Households (2024)
1 KM	2,235
3 KM	22,294
5 KM	73,935



Scotiabank

Contact

BRETT CHARTIER, Associate Vice President, Sales & Leasing
(204) 985-1366

brett.charteir@capitalgrp.ca

Services provided by Brett Chartier Personal Real Estate Corporation

DAWSON Groaning, Advisor, Sales & Leasing
(204) 985-1383

dawson.groaning@capitalgrp.ca

CAPITAL COMMERCIAL REAL ESTATE SERVICES INC.

300-570 Portage Avenue, Winnipeg, MB R3C 0G4 | T (204) 943-5700 | F (204) 956-2783 | capitalgrp.ca