

For Lease

OFFICE/WAREHOUSE SPACE IN THE ST. JAMES AREA



1328 CLIFTON STREET

WINNIPEG, MB

PROPERTY DETAILS

LAND AREA	35,371 sq. ft. (+/-)
BUILDING AREA	15,881 sq. ft. (+/-)
AREA AVAILABLE	Unit 1328: 2,252 sq. ft. (+/-)
ZONING	M3 - Industrial
RENTAL RATE	\$9.00 per sq. ft. net per annum
ADDITIONAL RENT	TBD

CONTACT

Bob Antymniuk

Senior Advisor - Sales & Leasing

(204) 985-1364

bob.antymniuk@capitalgrp.ca

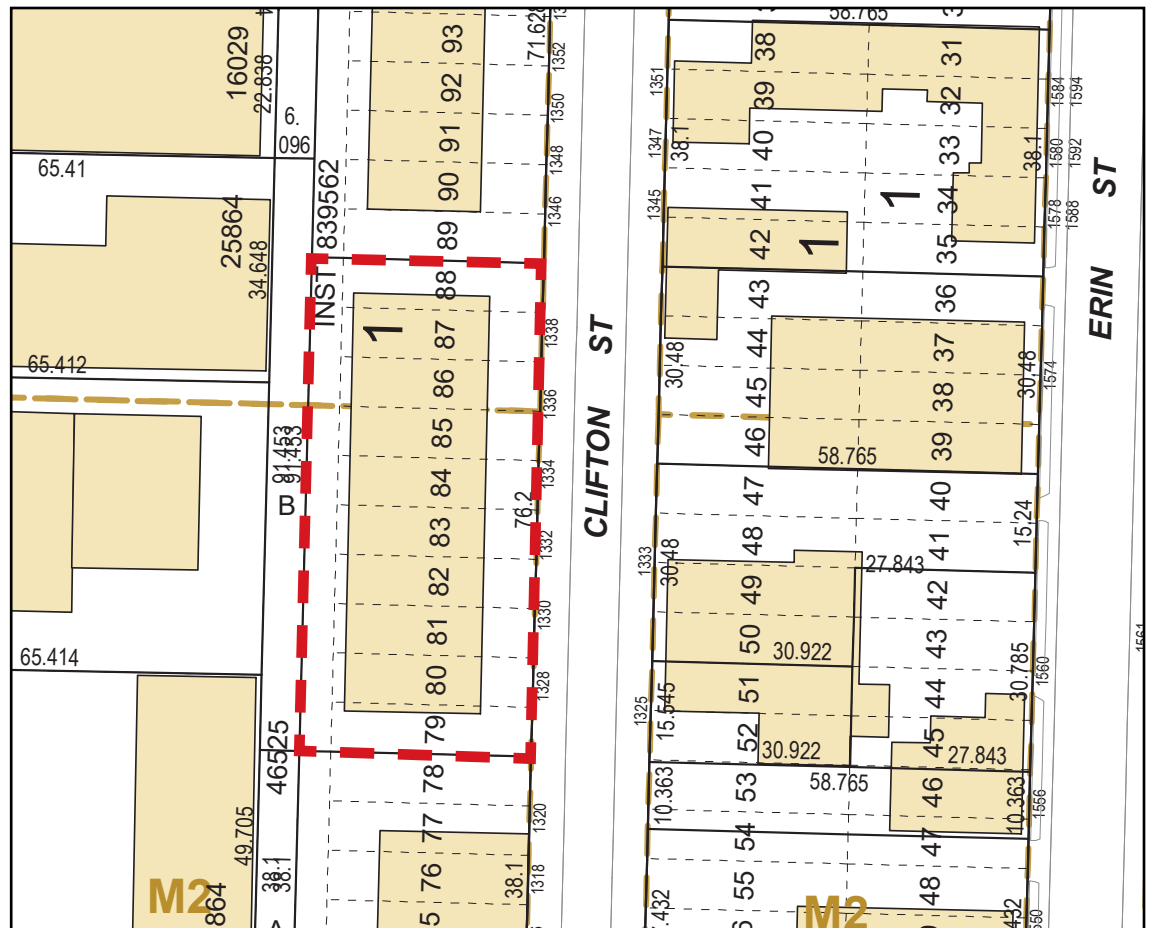
capitalgrp.ca

1328 CLIFTON STREET Winnipeg, MB

LOCATION MAP



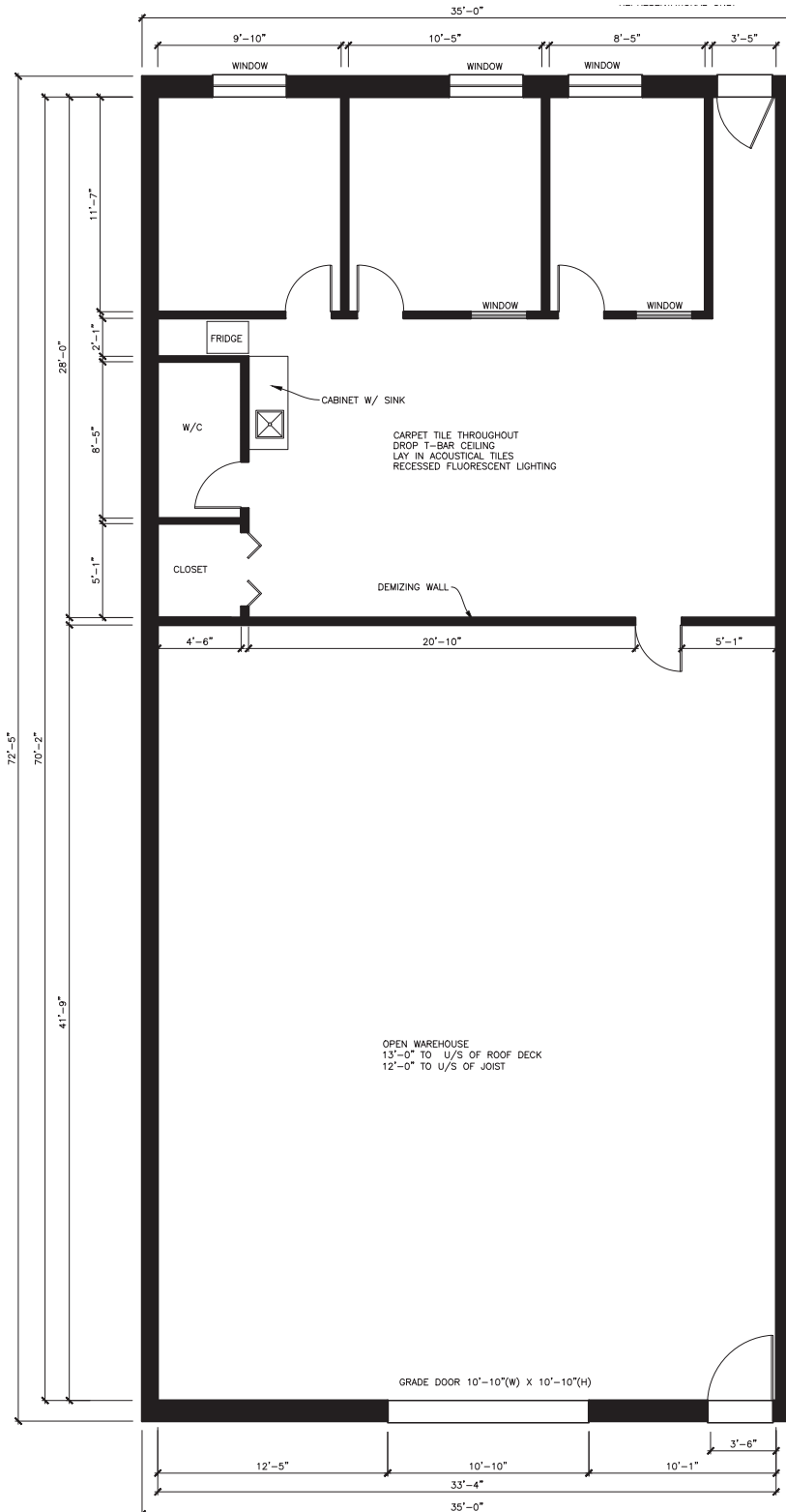
ZONING MAP



Capital
COMMERCIAL REAL ESTATE
SERVICES INC.

1328 CLIFTON STREET Winnipeg, MB

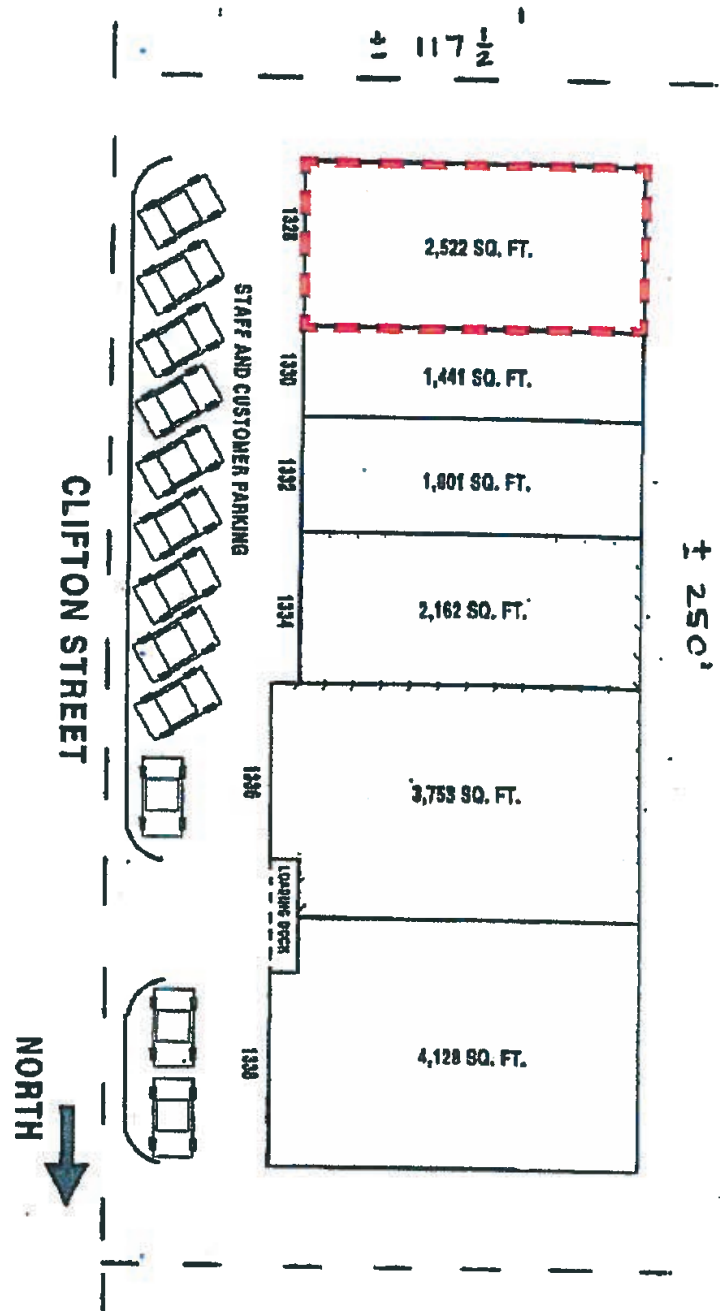
FLOOR PLAN



1328 CLIFTON STREET

Winnipeg, MB

SITE PLAN



CONTACT

Bob Antymniuk

Senior Advisor - Sales & Leasing

(204) 985-1364

bob.antymniuk@capitalgrp.ca

capitalgrp.ca

Disclaimer: Capital Commercial Real Estate Services Inc. ("Capital") does not accept or assume any responsibility or liability, direct or consequential, for the information set out herein, including, without limitation, any projections, images, opinions, assumptions and estimates obtained from third parties. This information has not been verified by Capital, and Capital does not guarantee the accuracy, correctness and completeness of this information. The recipient of this information should take such steps as the recipient may deem necessary to verify the information in this document prior to placing any reliance upon it. The information may change and any property described in this document may be withdrawn from the market at any time without notice or obligation to the recipient from Capital.


Capital
COMMERCIAL REAL ESTATE
SERVICES INC.