

FOR LEASE

SUBURBAN OFFICE SPACE ON MAIN STREET



COMMERCIAL REAL ESTATE
SERVICES INC.



2110 Main Street

Winnipeg, MB

PROPERTY DETAILS

AREA AVAILABLE	Unit 203: 1,199 sq. ft. (+/-)
	Unit 205: 1,044 sq. ft. (+/-)
	Unit 208: 1,125 sq. ft. (+/-)
	Unit 209: 1,087 sq. ft. (+/-)

LEASE RATE	\$13.50 per sq. ft. net
------------	-------------------------

ADDITIONAL RENT	\$11.75 per sq. ft. (plus mgmt fee of 5% of base rent) (inclusive of utilities, CAM & taxes)
-----------------	---

PROPERTY HIGHLIGHTS	<ul style="list-style-type: none">• Located on Main Street directly across from Kildonan Park Golf Course.• Units 203, 205 & 209 existing build-out ideal for professional medical or office use.• Excellent on-site parking• Easy accessibility for public transportation
---------------------	---

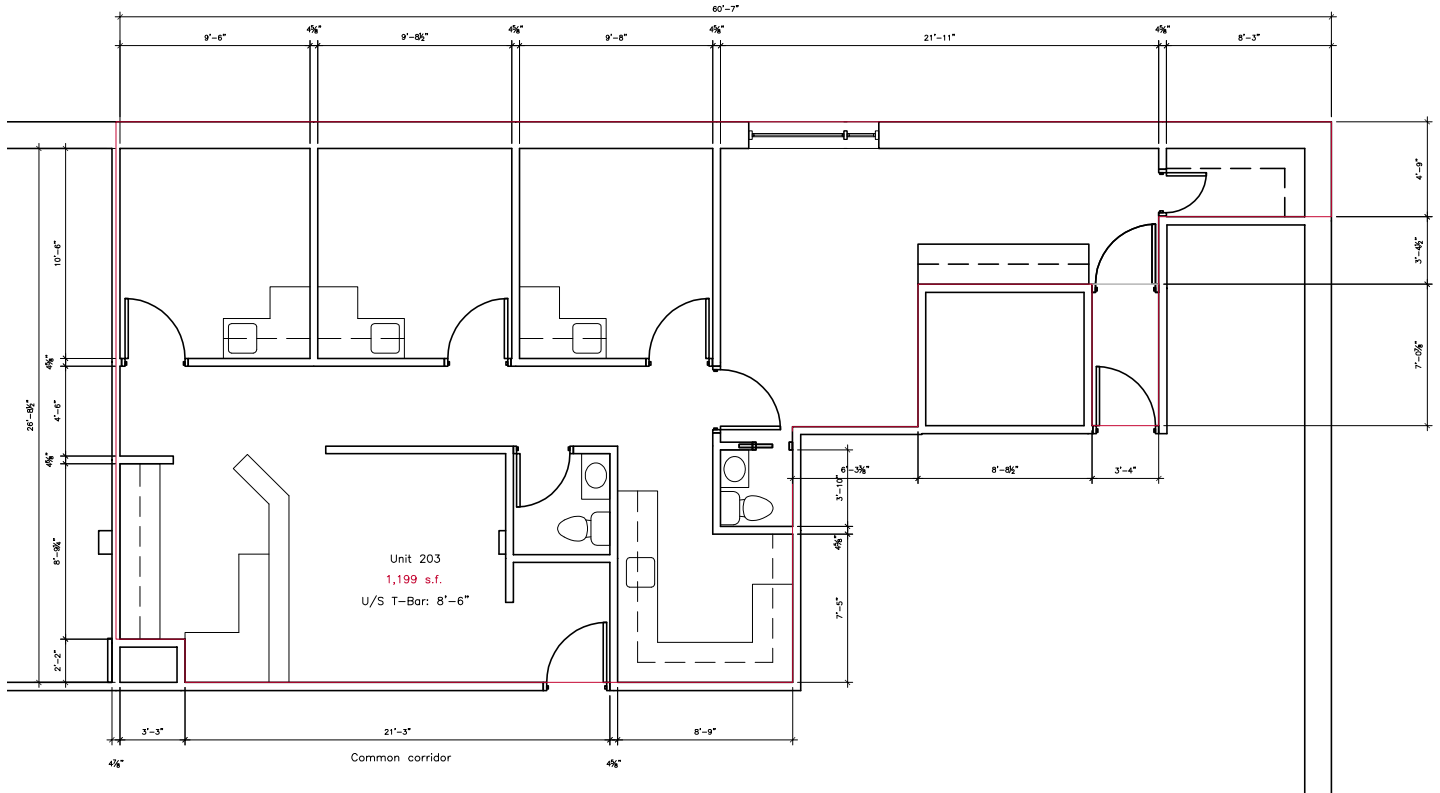
For more information please contact:

Brett Chartier
Advisor - Sales & Leasing
204.943.5700
brett.chartier@capitalgrp.ca

Rennie Zegalski
Principal
204.943.5700
rennie.zegalski@capitalgrp.ca

capitalgrp.ca

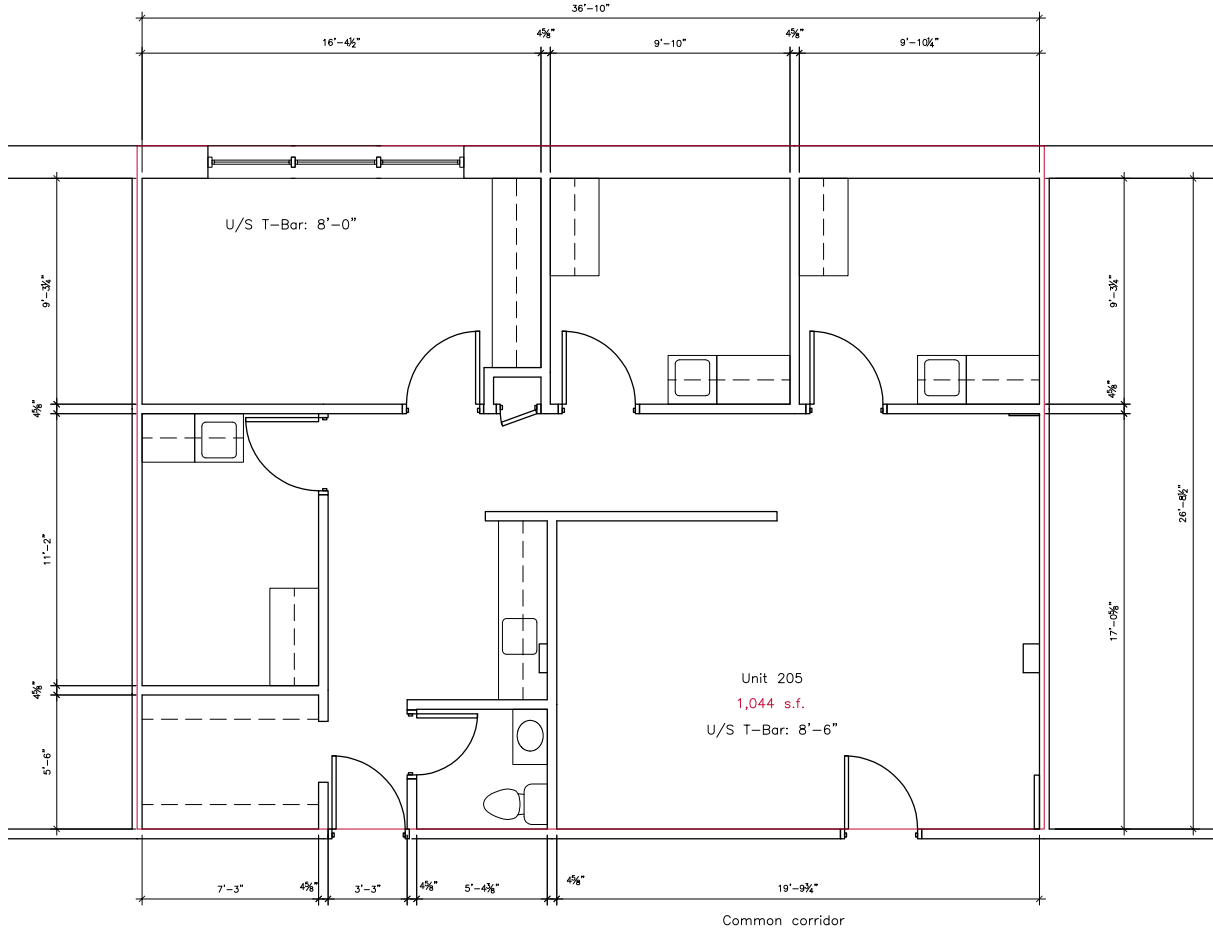
UNIT 203 FLOOR PLAN



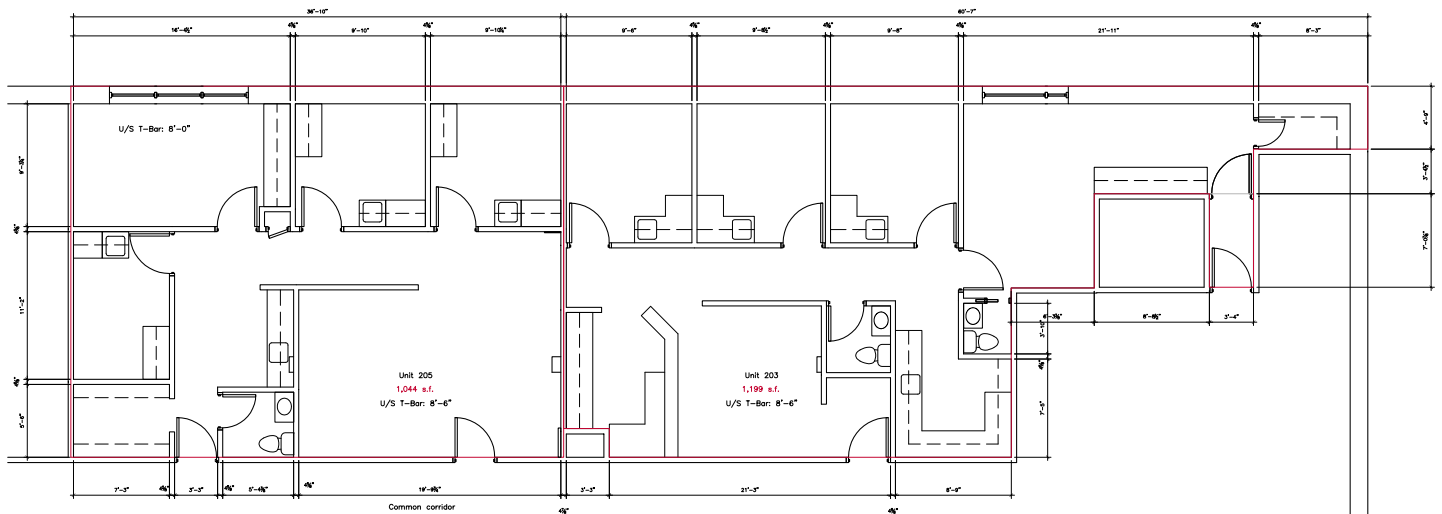
UNIT 203 PHOTOGRAPHS



UNIT 205 FLOOR PLAN



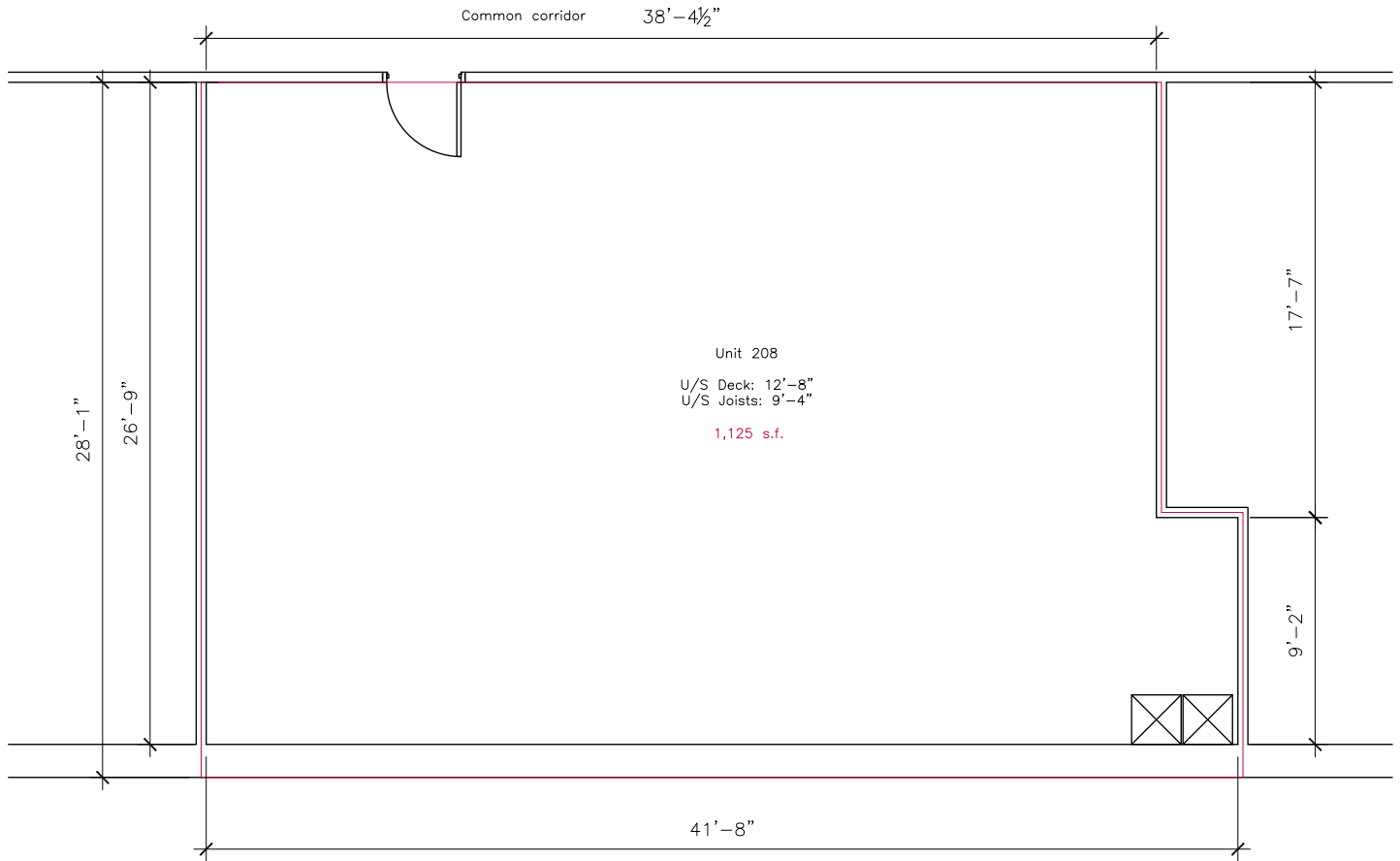
UNITS 203 & 205 FLOOR PLAN



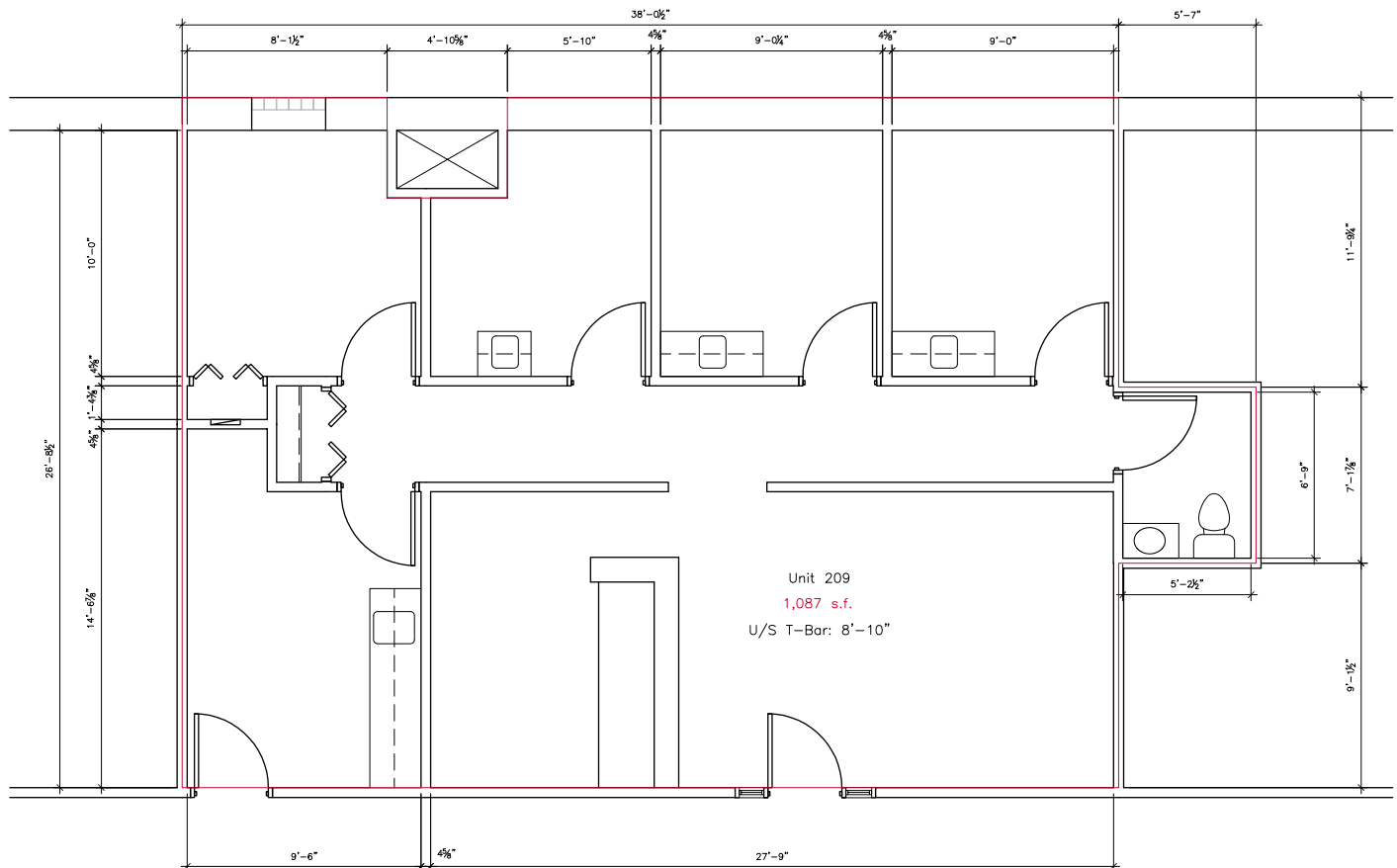
UNIT 205 PHOTOGRAPHS



UNIT 208 FLOOR PLAN



UNIT 209 FLOOR PLAN



For more information please contact:

Brett Chartier
Advisor - Sales & Leasing
204.943.5700
brett.chartier@capitalgrp.ca

Rennie Zegalski
Principal
204.943.5700
rennie.zegalski@capitalgrp.ca

capitalgrp.ca



Disclaimer: Capital Commercial Real Estate Services Inc. ("Capital") does not accept or assume any responsibility or liability, direct or consequential, for the information set out herein, including, without limitation, any projections, images, opinions, assumptions and estimates obtained from third parties. This information has not been verified by Capital, and Capital does not guarantee the accuracy, correctness and completeness of this information. The recipient of this information should take such steps as the recipient may deem necessary to verify the information in this document prior to placing any reliance upon it. The information may change and any property described in this document may be withdrawn from the market at any time without notice or obligation to the recipient from Capital.